

Laboratory Test Report

SAMPLE NAME : Cinnamon Cassia
CLIENT NAME : Plant Therapy
CLIENT LOT # : CA0109R
APRC LOT# : PT240212B

Column : ZB5 (60 m length × 0.25 mm inner diameter × 0.25 µm film thicknes
Instrument : Shimadzu GCMS-QP2010 Ultra
Carrier gas : Helium 80 psi
Temperature ramp : 2 degrees Celsius per minute up to 260-degree Celsius
Split ratio : 30:1
Sample preparation : 5% w/v solution with Dichloromethane

Interpretation on this sample

The analysis of this Cassia batch sample meets the expected chemical profile of pure essential oil of Cinnamomum cassia.

Analyzed by : Dr Prabodh Satyal
Reviewed by : Ambika Poudel

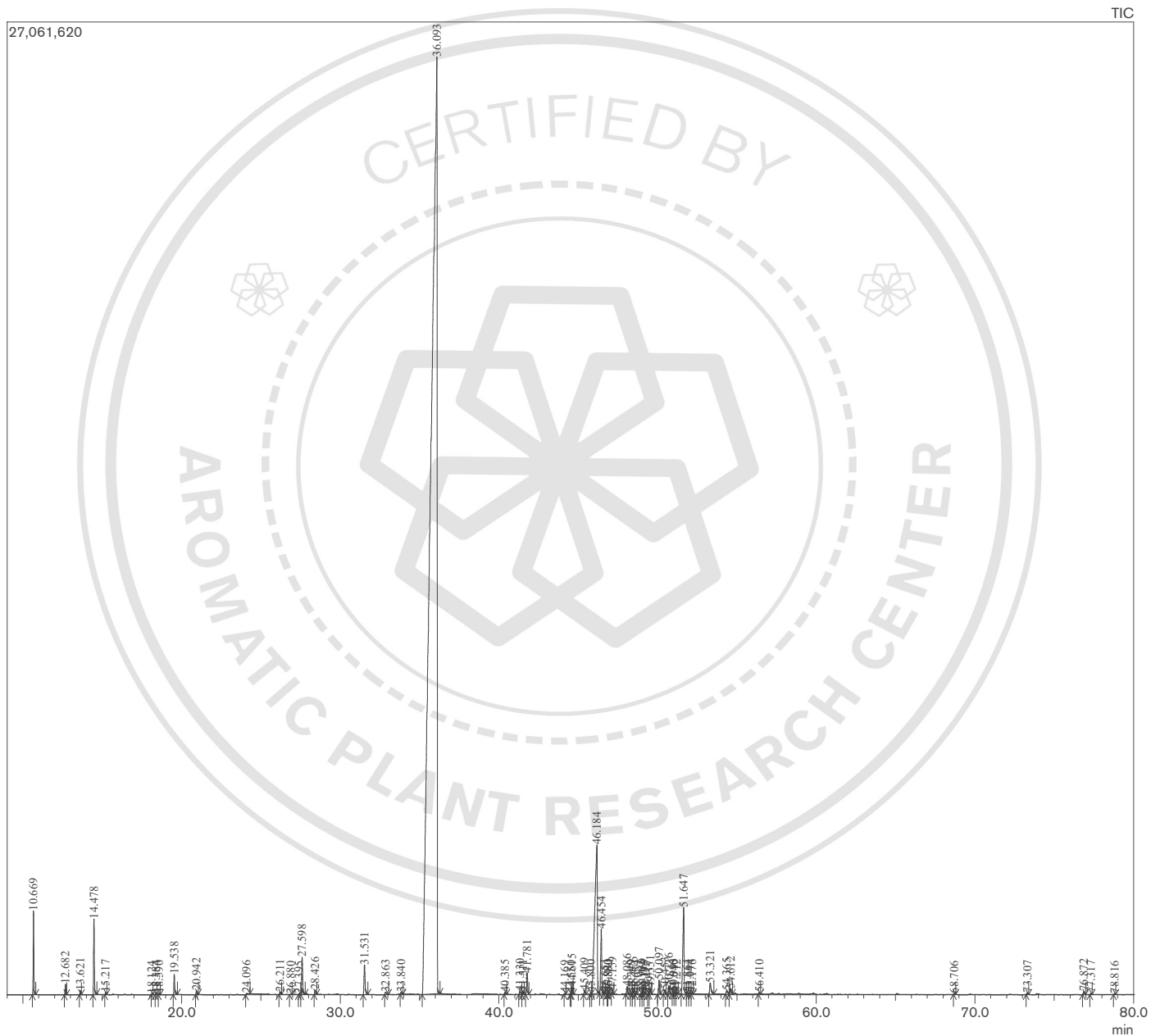
Issued Date : 2/13/2024

GCMS Analysis

Sample Information

Analyzed by : Dr. Prabodh Satyal
Analyzed : 2/13/2024 3:28:09 PM
Sample Type : Essential Oil
Sample Name : Cinnamon Cassia
Client Name : Plant Therapy
Client Lot# : CA0109R
APRC Lot# : PT240212B
Injection Volume : 0.30

Chromatogram



Peak Report

Peak#	R.Time	Name	Area%
1	10.669	Styrene	0.75
2	12.682	alpha-Pinene	0.10
3	13.621	Camphene	0.04
4	14.478	Benzaldehyde	0.81
5	15.217	beta-Pinene	0.02
6	18.124	para-Cymene	0.01
7	18.384	Limonene	0.02
8	18.590	1,8-Cineole	0.01
9	19.538	Salicylaldehyde	0.25
10	20.942	Acetophenone	0.05
11	24.096	Phenyl ethyl alcohol	0.03
12	26.211	3-Methyl benzofuran	0.04
13	26.880	Diolin II	0.01
14	27.395	2-Hydroxy acetophenone	0.01
15	27.598	Benzenepropanal	0.51
16	28.426	2-Methyl benzofuran	0.06
17	31.531	cis-Cinnamaldehyde	0.47
18	32.863	ortho-Anisaldehyde	0.05
19	33.840	2-Phenyl ethyl acetate	0.03
20	36.093	trans-Cinnamaldehyde	86.65
21	40.385	Eugenol	0.03
22	41.330	alpha-Ylangene	0.06
23	41.511	alpha-Hydroxy cinnamic acid	0.04
24	41.781	alpha-Copaene	0.32
25	44.169	cis-alpha-Bergamotene	0.01
26	44.550	alpha-Santalene	0.01
27	44.615	beta-Caryophyllene	0.10
28	45.409	trans-alpha-Bergamotene	0.06
29	45.800	Aromadendrene	0.03
30	46.184	Coumarin	5.40
31	46.454	trans-Cinnamyl acetate	0.93
32	46.651	trans-beta-Farnesene	0.03
33	46.880	meta-Methoxy cinnamaldehyde	0.01
34	46.890	alpha-Humulene	0.01
35	47.159	allo-Aromadendrene	0.06
36	48.086	trans-Cadina-1(6),4-diene	0.11
37	48.349	alpha-Amorphene	0.02
38	48.476	ar-Curcumene	0.06
39	48.634	trans-beta-Bergamotene	0.01
40	48.995	beta-Selinene	0.03
41	49.069	Viridiflorene	0.05
42	49.195	trans-Muurola-4(14),5-diene	0.01
43	49.417	alpha-Selinene	0.01
44	49.551	alpha-Murolene	0.08
45	50.097	beta-Bisabolene	0.19
46	50.453	gamma-Cadinene	0.07
47	50.726	delta-Cadinene	0.12
48	50.993	trans-Calamenene	0.03
49	51.040	Myristicin	0.01
50	51.212	trans-gamma-Bisabolene	0.02
51	51.647	trans-ortho-Methoxy cinnamaldehyde	1.61
52	51.864	alpha-Cadinene	0.04
53	52.044	trans-alpha-Bisabolene	0.03
54	52.176	alpha-Calacorene	0.02
55	53.321	trans-Nerolidol	0.23
56	54.365	Spathulenol	0.08
57	54.612	Caryophyllene oxide	0.08
58	56.410	Tetradecanal	0.03
59	68.706	Phytone	0.01
60	73.307	Ent-rosa-5,15-diene	0.02
61	76.872	13-epi-Dolabradiene	0.05
62	77.317	13-epi-Manool oxide	0.01
63	78.816	beta-Kaurene	0.01
			100.00