

Date : 2024-08-22

CERTIFICATE OF ANALYSIS - GC PROFILING

SAMPLE IDENTIFICATION

Internal code : 24H09-PTH01

Customer Identification : Egyptian Geranium - Egypt - G30113R

Type : Essential Oil

Source : *Pelargonium graveolens* ct. Egyptian

Customer : Plant Therapy

Checked and approved by:

Alexis St-Gelais, Ph. D., Chimiste 2013-174

Notes: This report may not be published, including online, without the written consent from Laboratoire PhytoChemia. This report is digitally signed, it is only considered valid if the digital signature is intact. The results only describe the samples that were submitted to the assays.

GAS CHROMATOGRAPHIC ANALYSIS

Method : PC-MAT-014 - Analysis of the composition of an essential oil or other volatile liquide by FAST GC-FID

✖ISO

Results : See analysis summary (next page)

Analyst : Alexis St-Gelais, Ph. D., Chimiste 2013-174

Date : 2024-08-22

PHYSICOCHEMICAL DATA

Refractive index : 1.4679 ± 0.0003 (20 °C)

Method : PC-MAT-016 - Measure of the refractive index of a liquid.

Analyst : Cindy Caron B. Sc.

Date : 2024-08-09

CONCLUSION

No adulterant, contaminant or diluent has been detected using this method.

ANALYSIS SUMMARY - CONSOLIDATED CONTENTS

New readers of similar reports are encouraged to read table footnotes at least once.

Identification	%	Class
Isobutyral	tr	Aliphatic aldehyde
2-Methyl-3-buten-2-ol	0.01	Aliphatic alcohol
Isovaleral	tr	Aliphatic aldehyde
2-Methylbutyral	tr	Aliphatic aldehyde
Isoamyl alcohol	0.01	Aliphatic alcohol
Prenal	0.01	Aliphatic aldehyde
Isoamyl formate	tr	Aliphatic ester
Hexanal	0.01	Aliphatic aldehyde
Unknown	0.01	Unknown
3-Methylpentanol	0.04	Aliphatic alcohol
(3Z)-Hexenol	0.02	Aliphatic alcohol
Hexanol	tr	Aliphatic alcohol
3-Acetyl-3-methylcyclopentene	0.01	Aliphatic ketone
3-Methylpentyl formate?	0.01	Aliphatic ester
α -Pinene	0.47	Monoterpene
Unknown	0.02	Unknown
Camphene	0.02	Monoterpene
Benzaldehyde	0.02	Simple phenolic
Geranic oxide	0.05	Monoterpenic ether
β -Pinene	0.01	Monoterpene
Octen-3-ol	0.02	Aliphatic alcohol
6-Methyl-5-hepten-2-one	0.06	Aliphatic ketone
Unknown	0.03	Monoterpene
<i>trans</i> -Dehydroxylinalool oxide	0.03	Monoterpenic ether
Myrcene	0.10	Monoterpene
<i>cis</i> -Dehydroxylinalool oxide	0.01	Monoterpenic ether
α -Phellandrene	0.07	Monoterpene
Δ^3 -Carene	0.03	Monoterpene
α -Terpinene	0.01	Monoterpene
<i>para</i> -Cymene	0.08	Monoterpene
Limonene	0.16	Monoterpene
β -Phellandrene	[0.07]	Monoterpene
1,8-Cineole	[0.07]	Monoterpenic ether
Unknown	0.04	Unknown
(Z)- β -Ocimene	0.09	Monoterpene
(E)- β -Ocimene	0.10	Monoterpene
Unknown	0.03	Unknown
2,6-Dimethyl-5-heptenal (melonal)	0.02	Aliphatic aldehyde
γ -Terpinene	0.02	Monoterpene
<i>cis</i> -Sabinene hydrate	0.01	Monoterpenic alcohol

Unknown	0.02	Oxygenated monoterpene
<i>cis</i> -Linalool oxide (fur.)	0.20	Monoterpenic alcohol
Fenchone	0.02	Monoterpenic ketone
<i>trans</i> -Linalool oxide (fur.)	0.14	Monoterpenic alcohol
<i>trans</i> -Sabinene hydrate	0.02	Monoterpenic alcohol
Linalool	3.87	Monoterpenic alcohol
(<i>Z</i>)-6-Methyl-3,5-heptadien-2-one	0.03	Aliphatic ketone
<i>cis</i> -Rose oxide	1.07	Monoterpenic ether
Phenylethyl alcohol	0.02	Simple phenolic
<i>trans</i> -Rose oxide	0.45	Monoterpenic ether
Isopulegol	0.08	Monoterpenic alcohol
Menthone	1.15	Monoterpenic ketone
Unknown	0.05	Unknown
iso-Isopulegol	0.04	Monoterpenic alcohol
Citronellal	0.11	Monoterpenic aldehyde
Isomenthone	5.67	Monoterpenic ketone
Borneol	0.03	Monoterpenic alcohol
neo-Menthol	0.06	Monoterpenic alcohol
Menthol	0.03	Monoterpenic alcohol
Terpinen-4-ol	0.04	Monoterpenic alcohol
Isomenthol	0.18	Monoterpenic alcohol
<i>para</i> -Cymen-8-ol	0.02	Monoterpenic alcohol
α -Terpineol	0.30	Monoterpenic alcohol
Unknown	0.01	Unknown
Unknown	0.02	Oxygenated monoterpene
β -Cyclocitral	0.03	Monoterpenic aldehyde
2,3-Epoxyneral?	0.07	Monoterpenic aldehyde
Nerol	0.23	Monoterpenic alcohol
Citronellol	31.36	Monoterpenic alcohol
Neral	0.58	Monoterpenic aldehyde
Piperitone	0.04	Monoterpenic ketone
Geraniol	13.16	Monoterpenic alcohol
Geranial	0.76	Monoterpenic aldehyde
Citronellyl formate	6.61	Monoterpenic ester
Neryl formate	0.08	Monoterpenic ester
Geranyl formate	2.52	Monoterpenic ester
(3 <i>Z</i>)-Hexenyl tiglate	0.02	Aliphatic ester
Methyl geranate	0.04	Monoterpenic ester
Citronellic acid	0.06	Monoterpenic acid
α -Cubebene	0.24	Sesquiterpene
Phenylethyl propionate	0.03	Phenolic ester
Citronellyl acetate	0.25	Monoterpenic ester
Neryl acetate	0.03	Monoterpenic ester
Geranic acid	0.06	Aliphatic acid
α -Ylangene	0.05	Sesquiterpene

α -Copaene	0.56	Sesquiterpene
β -Bourbonene	1.14	Sesquiterpene
1,5-diepi- β -Bourbonene	0.07	Sesquiterpene
Geranyl acetate	0.45	Monoterpenic ester
β -Elemene	0.08	Sesquiterpene
Phenylethyl isobutyrate	0.06	Phenolic ester
Isocaryophyllene	0.02	Sesquiterpene
α -Gurjunene	0.09	Sesquiterpene
β -Caryophyllene	1.35	Sesquiterpene
β -Copaene	0.15	Sesquiterpene
Aromadendrene	0.06	Sesquiterpene
Unknown	0.43	Sesquiterpene
6,9-Guaiadiene	0.52	Sesquiterpene
Citronellyl propionate	0.33	Monoterpenic ester
α -Humulene	0.31	Sesquiterpene
allo-Aromadendrene	0.22	Sesquiterpene
Unknown	0.07	Sesquiterpene
<i>trans</i> -Cadina-1(6),4-diene	0.25	Sesquiterpene
γ -Muurolene	0.11	Sesquiterpene
Germacrene D	1.60	Sesquiterpene
Geranyl propionate	0.67	Monoterpenic ester
α -Amorphene	0.12	Sesquiterpene
β -Selinene	0.17	Sesquiterpene
γ -Amorphene	0.07	Sesquiterpene
Phenylethyl isovalerate	0.05	Phenolic ester
Bicyclogermacrene	0.13	Sesquiterpene
Viridiflorene	0.58	Sesquiterpene
α -Selinene	0.24	Sesquiterpene
4-epi- <i>cis</i> -Dihydroagarofuran	0.06	Sesquiterpenic ether
α -Muurolene	0.31	Sesquiterpene
γ -Cadinene	0.38	Sesquiterpene
7-epi- α -Selinene	0.10	Sesquiterpene
Geranyl isobutyrate	0.20	Monoterpenic ester
<i>trans</i> -Calamenene	0.25	Sesquiterpene
δ -Cadinene	0.91	Sesquiterpene
<i>trans</i> -Cadina-1,4-diene	0.67	Sesquiterpene
Citronellyl butyrate	0.15	Monoterpenic ester
Phenylethyl angelate?	0.12	Phenolic ester
α -Agarofuran	0.27	Sesquiterpenic ether
1-nor-Bourbonanone	0.05	Norsesquiterpenic ketone
Geranyl butyrate	1.16	Monoterpenic ester
Spathulenol	0.29	Sesquiterpenic alcohol
Caryophyllene oxide	0.17	Sesquiterpenic ether
Globulol	0.12	Sesquiterpenic alcohol
Phenylethyl tiglate	0.83	Phenolic ester

Viridiflorol	0.09	Sesquiterpenic alcohol
Geranyl 2-methylbutyrate?	0.09	Monoterpenic ester
Geranyl isovalerate	0.10	Monoterpenic ester
10-epi- γ -Eudesmol	5.03	Sesquiterpenic alcohol
1-epi-Cubenol	0.16	Sesquiterpenic alcohol
γ -Eudesmol	0.23	Sesquiterpenic alcohol
Unknown	0.22	Oxygenated sesquiterpene
Citronellyl valerate?	0.09	Monoterpenic ester
Cubenol	0.34	Sesquiterpenic alcohol
τ -Cadinol	0.04	Sesquiterpenic alcohol
τ -Muurolol	0.02	Sesquiterpenic alcohol
β -Eudesmol	0.31	Sesquiterpenic alcohol
α -Cadinol	0.08	Sesquiterpenic alcohol
α -Eudesmol	0.23	Sesquiterpenic alcohol
Valerianol	0.11	Sesquiterpenic alcohol
Geranyl valerate	0.19	Monoterpenic ester
<i>trans</i> -Calamene-10-ol	0.02	Sesquiterpenic alcohol
Citronellyl tiglate	0.31	Monoterpenic ester
Citronellyl 4-methylvalerate	0.10	Monoterpenic ester
Geranyl tiglate	1.14	Monoterpenic ester
Geranyl 4-methylvalerate?	0.18	Monoterpenic ester
Citronellyl caproate	0.05	Monoterpenic ester
Geranyl caproate	0.12	Monoterpenic ester
Citronellyl heptanoate	0.06	Monoterpenic ester
Phytone	0.04	Terpenic ketone
Geranyl heptanoate	0.11	Monoterpenic ester
Citronellyl caprylate	0.04	Monoterpenic ester
Geranyl caprylate	0.06	Monoterpenic ester
Unknown	0.05	Unknown
Unknown	0.04	Unknown
Consolidated total	97.15	

tr: The compound has been detected below 0.005% of the total signal

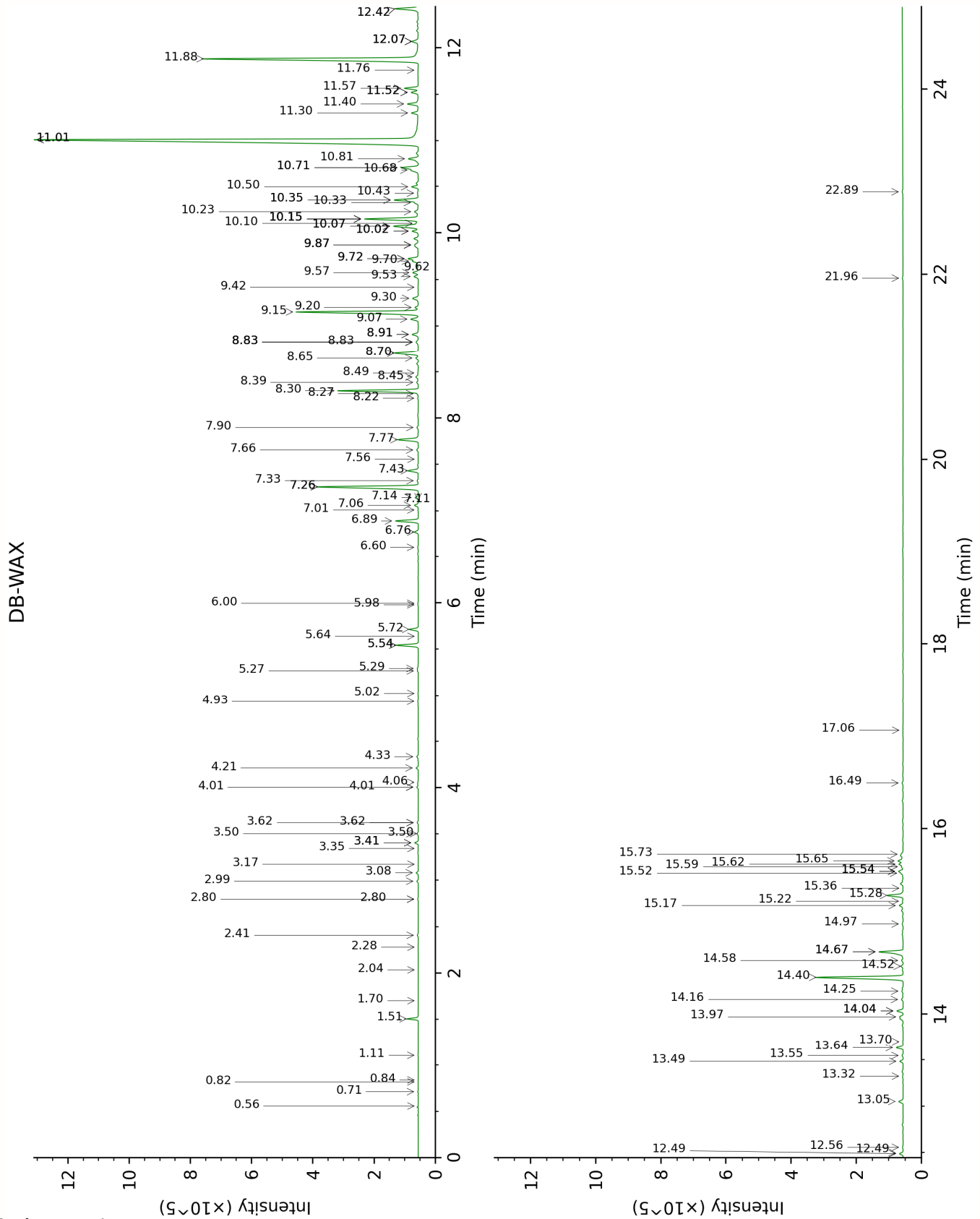
Note: no correction factor was applied

About "consolidated" data: The table above presents the breakdown of the sample volatile constituents after applying an algorithm to collapse data acquired from the multi-columns system of PhytoChemia into a single set of consolidated contents. In case of discrepancies between columns, the algorithm is set to prioritize data from the most standard DB-5 column, and smallest values so as to avoid overestimating individual content. This process is semi-automatic. Advanced users are invited to consult the "Full analysis data" table after the chromatograms in this report to access the full untreated data and perform their own calculations if needed.

Unknowns: Unknown compounds' mass spectral data is presented in the "Full analysis data" table. The occurrence of unknown compounds is to be expected in many samples, and does not denote particular problems unless noted otherwise in the conclusion.

Bracketed value ([xx]): A bracketed percent value indicate that two or more compound percentage could not be solved due to coelution.

This page was intentionally left blank. The following pages present the complete data of the analysis.



FULL ANALYSIS DATA

Isobutyral	Column DB-WAX			Column DB-5		
	0.56	784.8	tr	0.44	537.3	tr
2-Methyl-3-buten-2-ol	1.70	1012.3	0.01	0.53	606.2	0.01
Isovaleral	0.84	885.9	tr	0.63	641.0	tr
2-Methylbutyral	0.82	878.9	tr	0.66	651.1	tr
Isoamyl alcohol	3.62*	1175.2	[0.06]	1.01	732.4	0.01
Prenal	3.41*	1158.7	[0.17]	1.37	782.8	0.01
Isoamyl formate				1.42	789.4	tr
Hexanal	2.04	1043.9	0.01	1.50	799.8	0.01
Unknown PEGR III [m/z 81, 69 (80), 41 (65), 83 (52), 109 (48), 55 (47)...]	0.71	843.0	0.02	1.75	822.8	0.01
3-Methylpentanol	5.27	1293.9	0.04	2.05	847.3	0.04
(3Z)-Hexenol	5.98	1344.8	0.02	2.17	857.1	0.02
Hexanol	5.64	1320.6	0.01	2.37	873.5	tr
3-Acetyl-3-methylcyclopentene	1.11	931.7	0.01	2.46	881.0	0.01
3-Methylpentyl formate?	3.35	1154.0	0.02	2.69	900.1	0.01
α -Pinene	1.51	992.8	0.46	3.14	930.5	0.47
Unknown PEGR IV [m/z 122, 107 (38), 121 (35), 79 (28), 77 (27), 43 (26)...]				3.19	934.1	0.02
Camphene				3.33	943.1	0.02
Benzaldehyde	7.56	1459.3	0.01	3.50	954.5	0.02
Geranic oxide	2.41	1079.5	0.05	3.73	969.3	0.05
β -Pinene	2.28	1067.2	0.01	3.76	971.2	0.01
Octen-3-ol	7.01	1419.0	0.02	3.94	983.5	0.02
6-Methyl-5-hepten-2-one	5.29	1295.9	0.05	3.99	987.0	0.06
Unknown BUSA XIII [m/z 121, 93 (51), 136 (40), 79 (34), 91 (23), 105 (19), 107 (15)]	2.80*	1112.2	[0.03]	4.03	989.2	0.03
<i>trans</i> -Dehydroxylinalool oxide	3.62*	1175.2	[0.06]	4.06	991.6	0.03
Myrcene	3.08	1134.0	0.09	4.08	992.5	0.10
<i>cis</i> -Dehydroxylinalool	4.01*	1203.9	[0.07]	4.22*	1001.8	[0.08]

oxide						
α -Phellandrene	2.99	1127.0	0.07	4.22*	1001.8	[0.08]
Δ^3 -Carene	2.80*	1112.2	[0.03]	4.29	1006.5	0.03
α -Terpinene	3.18	1141.0	0.01	4.42	1014.2	0.01
<i>para</i> -Cymene	4.34	1227.3	0.08	4.54	1021.8	0.08
Limonene	3.41*	1158.7	[0.17]	4.61*	1026.1	[0.25]
β -Phellandrene	3.50*	1166.2	[0.07]	4.61*	1026.1	[0.25]
1,8-Cineole	3.50*	1166.2	[0.07]	4.61*	1026.1	[0.25]
Unknown COCI XLIV [m/z 59, 43 (12), 109 (11), 41 (10), 127 (8)...]	6.60	1388.9	0.04	4.65	1028.9	0.04
(<i>Z</i>)- β -Ocimene	4.01*	1203.9	[0.07]	4.82	1039.7	0.09
(<i>E</i>)- β -Ocimene	4.21	1218.6	0.10	4.98*	1049.7	[0.12]
Unknown COCI V [m/z 125, 69 (75), 41 (34), 55 (25), 93 (22)... 140 (3)]	4.93	1270.1	0.03	4.98*	1049.7	[0.12]
2,6-Dimethyl-5- heptenal (melonal)	5.54*	1313.8	[1.08]	5.04	1053.0	0.02
γ -Terpinene	4.06	1207.5	0.02	5.12	1058.2	0.02
<i>cis</i> -Sabinene hydrate	7.11	1426.6	0.01	5.25	1066.1	0.01
Unknown PIMA I [m/z 79, 93 (60), 43 (40), 94 (35), 137 (33), 77 (26), 91 (20), 152 (18)]	5.02	1276.5	0.02	5.27	1067.8	0.02
<i>cis</i> -Linalool oxide (fur.)	6.76	1400.9	0.20	5.32	1070.5	0.20
Fenchone	6.00	1346.0	0.02	5.48	1080.9	0.02
<i>trans</i> -Linalool oxide (fur.)	7.14	1428.9	0.18	5.56	1086.0	0.14
<i>trans</i> -Sabinene hydrate	8.22	1508.4	0.03	5.74	1096.7	0.02
Linalool	8.30	1514.7	3.81	5.84	1103.0	3.87
(<i>Z</i>)-6-Methyl-3,5- heptadien-2-one	8.49	1529.4	0.04	5.88	1105.9	0.03
<i>cis</i> -Rose oxide	5.54*	1313.8	[1.08]	5.95	1110.0	1.07
Phenylethyl alcohol	12.42*	1853.0	[1.22]	6.00	1113.3	0.02
<i>trans</i> -Rose oxide	5.72	1326.0	0.45	6.18	1125.2	0.45
Isopulegol	8.39	1521.6	0.09	6.44	1141.6	0.08
Menthone	6.89	1410.3	1.16	6.56	1149.0	1.15
Unknown PEGR I [m/z 43, 141 (51), 55]	8.83*	1555.5	[0.17]	6.60	1151.7	0.05

(36), 69 (31), 41 (29)... 156 (4)]						
iso-Isopulegol	8.26	1512.2	0.04	6.62*	1153.2	[0.15]
Citronellal	7.26*	1437.4	[5.80]	6.62*	1153.2	[0.15]
Isomenthone	7.26*	1437.4	[5.80]	6.72	1159.7	5.67
Borneol	10.02*	1649.8	[0.31]	6.76	1162.2	0.03
neo-Menthol	8.83*	1555.5	[0.17]	6.82	1165.6	0.06
Menthol	9.42	1601.3	0.03	6.93	1172.7	0.03
Terpinen-4-ol	8.83*	1555.5	[0.17]	6.95	1174.2	0.04
Isomenthol	9.20	1584.2	0.18	7.05	1180.5	0.18
<i>para</i> -Cymen-8-ol	11.76	1794.6	0.02	7.11	1184.3	0.02
α -Terpineol	10.02*	1649.8	[0.31]	7.18	1188.4	0.30
Unknown MEPI V [m/z 43, 99 (84), 81 (46), 986 (43), 126 (36), 71 (28)... 170 (12)]				7.40	1202.9	0.01
Unknown DRMO II [m/z 123, 81 (40), 67 (29), 79 (29), 93 (26), 121 (25), 41 (24), 55 (18), 69 (15)...]				7.44	1205.2	0.02
β -Cyclocitral	8.91*	1561.9	[0.36]	7.57	1214.1	0.03
2,3-Epoxyneral?				7.68	1221.7	0.07
Nerol	11.30	1755.6	0.30	7.80	1229.5	0.23
Citronellol	11.01*	1731.3	[31.69]	7.92	1237.7	31.36
Neral	9.72*	1626.0	[0.60]	7.95	1239.4	0.58
Piperitone	10.15*	1660.3	[2.83]	8.09	1248.8	0.04
Geraniol	11.88	1805.5	13.23	8.28	1261.6	13.16
Geranial	10.35*	1676.6	[1.35]	8.41	1270.0	0.76
Citronellyl formate	9.15	1580.5	6.74	8.53	1278.2	6.61
Neryl formate	9.72*	1626.0	[0.60]	8.58	1281.4	0.08
Geranyl formate	10.15*	1660.3	[2.83]	8.90	1302.8	2.52
(3Z)-Hexenyl tiglate	9.62	1617.6	0.06	9.02	1311.7	0.02
Methyl geranate	10.07*	1654.0	[1.57]	9.20	1324.3	0.04
Citronellic acid				9.33	1333.4	0.06
α -Cubebene	7.06	1422.7	0.20	9.52	1346.6	0.24
Phenylethyl propionate	12.07*	1821.9	[0.35]	9.55	1348.7	0.03
Citronellyl acetate	9.70	1623.9	0.28	9.63	1354.5	0.25
Neryl acetate	10.43	1682.6	0.08	9.73	1361.6	0.03
Geranic acid				9.81	1366.7	0.06
α -Ylangene	7.33	1442.3	0.07	9.83	1368.6	0.05
α -Copaene	7.43	1450.2	0.56	9.87	1371.3	0.56
β -Bourbonene	7.77	1474.9	1.14	9.98	1379.2	1.14

1,5-diepi- β -Bourbonene	7.66	1466.7	0.09	10.00	1380.6	0.07
Geranyl acetate	10.81	1714.0	0.54	10.05	1384.0	0.45
β -Elemene	8.70*	1546.0	[1.33]	10.12	1388.6	0.08
Phenylethyl isobutyrate	12.07*	1821.9	[0.35]	10.15	1391.2	0.06
Isocaryophyllene	8.44	1526.1	0.17	10.28	1399.9	0.02
α -Gurjunene	7.90	1484.6	0.08	10.32	1403.2	0.09
β -Caryophyllene	8.70*	1546.0	[1.33]	10.45	1412.4	1.35
β -Copaene	8.65	1541.8	0.13	10.59	1422.9	0.15
Aromadendrene	8.83*	1555.5	[0.17]	10.71	1432.0	0.06
Unknown BOCA IV [m/z 91, 161 (92), 105 (85), 119 (63), 133 (53), 79 (49), 204 (46)]	9.08	1574.5	0.41	10.79	1438.1	0.43
6,9-Guaiadiene	8.91*	1561.9	[0.36]	10.87*	1443.7	[0.85]
Citronellyl propionate	10.50	1688.1	0.33	10.87*	1443.7	[0.85]
α -Humulene	9.58	1614.0	0.29	10.90	1446.4	0.31
allo-Aromadendrene	9.30	1591.7	0.37	11.00	1453.4	0.22
Unknown AMBA XXIX [m/z 161, 105 (68), 119 (54), 91 (52), 93 (41), 79 (39)... 204 (6)]				11.08	1459.1	0.07
<i>trans</i> -Cadina-1(6),4-diene	9.53	1610.5	0.22	11.20	1468.4	0.25
γ -Muurolene	9.87*	1637.8	[0.36]	11.25	1471.9	0.11
Germacrene D	10.07*	1654.0	[1.57]	11.28*	1474.6	[2.27]
Geranyl propionate	11.57	1778.1	0.67	11.28*	1474.6	[2.27]
α -Amorphene	9.87*	1637.8	[0.36]	11.31	1476.5	0.12
β -Selinene	10.15*	1660.3	[2.83]	11.34	1478.9	0.17
γ -Amorphene	10.10	1656.5	0.07	11.41*	1484.0	[0.15]
Phenylethyl isovalerate	13.32	1934.1	0.05	11.41*	1484.0	[0.15]
Bicyclogermacrene	10.33	1674.5	0.13	11.49*	1489.6	[0.96]
Viridiflorene	9.87*	1637.8	[0.36]	11.49*	1489.6	[0.96]
α -Selinene	10.23	1666.6	0.24	11.49*	1489.6	[0.96]
4-epi- <i>cis</i> -Dihydroagarofuran	10.15*	1660.3	[2.83]	11.55	1494.2	0.06
α -Muurolene	10.35*	1676.6	[1.35]	11.56	1495.5	0.31
γ -Cadinene	10.68	1703.7	0.37	11.73	1508.0	0.38
7-epi- α -Selinene	10.71*	1705.9	[1.01]	11.80	1513.2	0.10

Geranyl isobutyrate	11.52*	1774.3	[0.36]	11.85	1517.3	0.20
<i>trans</i> -Calamenene	11.52*	1774.3	[0.36]	11.87*	1519.0	[1.16]
δ -Cadinene	10.71*	1705.9	[1.01]	11.87*	1519.0	[1.16]
<i>trans</i> -Cadina-1,4-diene	11.01*	1731.3	[31.69]	11.99	1528.1	0.67
Citronellyl butyrate	11.40	1763.8	0.56	12.03	1531.8	0.15
Phenylethyl angelate?	14.52	2046.0	0.12	12.08*	1535.3	[0.39]
α -Agarofuran	12.07*	1821.9	[0.35]	12.08*	1535.3	[0.39]
1-nor-Bourbonanone	13.70	1968.8	0.03	12.36	1557.5	0.05
Geranyl butyrate	12.42*	1853.0	[1.22]	12.40	1560.2	1.16
Spathulenol	14.67*	2061.0	[1.42]	12.52	1570.2	0.29
Caryophyllene oxide	13.05	1909.0	0.25	12.56	1572.8	0.17
Globulol	14.16	2011.7	0.10	12.60	1576.2	0.12
Phenylethyl tiglate	15.28	2120.5	0.88	12.65	1580.3	0.83
Viridiflorol	14.25	2020.4	0.08	12.70	1583.8	0.09
Geranyl 2-methylbutyrate?	12.49*	1858.5	[0.18]	12.90	1599.3	0.09
Geranyl isovalerate	12.49*	1858.5	[0.18]	12.92	1601.5	0.10
10-epi- γ -Eudesmol	14.40	2034.6	4.73	13.04	1611.6	5.03
1-epi-Cubenol	14.04*	1999.9	[0.33]	13.16	1621.0	0.16
γ -Eudesmol	15.17	2109.6	0.24	13.20	1624.1	0.23
Unknown PEGR II [m/z 147, 162 (79), 43 (64), 59 (64), 95 (47), 91 (44), 105 (43)... 238 (13)]	15.54*	2146.2	[0.27]	13.25	1628.5	0.22
Citronellyl valerate?	12.56	1864.6	0.04	13.28	1631.2	0.09
Cubenol	13.97†	1993.8	0.19	13.35*	1636.5	[0.64]
τ -Cadinol	15.22	2114.3	0.04	13.35*	1636.5	[0.64]
τ -Muurolol	15.36	2128.2	0.02	13.35*	1636.5	[0.64]
β -Eudesmol	15.66	2157.5	0.33	13.41	1641.7	0.31
α -Cadinol	15.73	2164.5	0.08	13.45*	1645.0	[0.31]
α -Eudesmol	15.62	2153.9	0.23	13.45*	1645.0	[0.31]
Valerianol	15.59	2151.2	0.08	13.49	1648.2	0.11
Geranyl valerate	13.49	1948.9	0.17	13.58	1655.8	0.19
<i>trans</i> -Calamenen-10-ol	17.06	2302.7	0.02	13.65	1661.7	0.02
Citronellyl tiglate	13.64	1962.6	0.35	13.69	1664.4	0.31
Citronellyl 4-methylvalerate				13.92	1683.6	0.10
Geranyl tiglate	14.67*	2061.0	[1.42]	14.11	1699.0	1.14
Geranyl 4-methylvalerate?	14.04*	1999.9	[0.33]	14.31	1716.2	0.18

Citronellyl caproate	13.55	1954.6	0.06	14.34	1719.0	0.05
Geranyl caproate	14.58	2052.0	0.09	14.72	1752.4	0.12
Citronellyl heptanoate				15.45	1815.7	0.06
Phytone	14.97	2089.8	0.07	15.76	1843.7	0.04
Geranyl heptanoate	15.52	2144.2	0.07	15.82	1849.6	0.11
Citronellyl caprylate	15.54*	2146.2	[0.27]	16.51	1912.9	0.04
Geranyl caprylate	16.49	2243.2	0.06	16.87	1947.0	0.06
Unknown COCI L [m/z 69, 83 (59), 81 (56), 137 (48), 41 (29), 139 (28)...]	21.96	2876.1	0.04	23.78	2707.3	0.05
Unknown CYWI III [m/z 69, 81 (84), 137 (53), 83 (30), 95 (27), 41 (19)...]	22.89	2998.1	0.05	24.23	2765.6	0.04
Total reported		96.43%			97.43%	

*: Two or more compounds are coeluting on this column

[xx]: Duplicate percentage due to coelutions, only the first one is taken into account in the consolidated total

†: Peaks apexes were resolved, but peaks overlapped and were summed for analysis

tr: The compound has been detected below 0.005% of total signal.

Note: no correction factor was applied

R.T.: Retention time (minutes)

R.I.: Retention index