

Date : 2023-12-21

CERTIFICATE OF ANALYSIS - GC PROFILING

SAMPLE IDENTIFICATION

**Internal code :** 23L14-PTH02

**Customer Identification :** Eucalyptus Globulus - China - E20113R

**Type :** Essential Oil

**Source :** *Eucalyptus globulus*

**Customer :** Plant Therapy

Checked and approved by:

---

Alexis St-Gelais, Ph. D., Chimiste 2013-174

*Notes: This report may not be published, including online, without the written consent from Laboratoire PhytoChemia. This report is digitally signed, it is only considered valid if the digital signature is intact. The results only describe the samples that were submitted to the assays.*

## GAS CHROMATOGRAPHIC ANALYSIS

**Method :** PC-MAT-014 - Analysis of the composition of an essential oil or other volatile liquide by FAST GC-FID

**\*ISO**

**Results :** See analysis summary (next page)

**Analyst :** Sylvain Mercier, M. Sc., Chimiste 2014-005

**Date :** 2023-12-18

## PHYSICOCHEMICAL DATA

**Refractive index :**  $1.4603 \pm 0.0003$  (20 °C)

**Method :** PC-MAT-016 - Measure of the refractive index of a liquid.

**Analyst :** Cindy Caron B. Sc.

**Date :** 2023-12-19

## CONCLUSION

No adulterant, contaminant or diluent has been detected using this method.

## ANALYSIS SUMMARY - CONSOLIDATED CONTENTS

New readers of similar reports are encouraged to read table footnotes at least once.

Identification	%	Class
Isoamyl alcohol	0.01	Aliphatic alcohol
Hashishene	0.02	Monoterpene
$\alpha$ -Thujene	0.05	Monoterpene
$\alpha$ -Pinene	5.86	Monoterpene
$\alpha$ -Fenchene	0.01	Monoterpene
Camphene	0.02	Monoterpene
Thuja-2,4(10)-diene	0.01	Monoterpene
$\beta$ -Pinene	0.31	Monoterpene
Sabinene	0.01	Monoterpene
6-Methyl-5-hepten-2-one	tr	Aliphatic ketone
<i>trans</i> -Dehydroxylinalool oxide	0.01	Monoterpenic ether
Myrcene	0.58	Monoterpene
$\alpha$ -Phellandrene	0.67	Monoterpene
$\alpha$ -Terpinene	0.17	Monoterpene
<i>para</i> -Cymene	2.40	Monoterpene
1,8-Cineole	80.73	Monoterpenic ether
$\beta$ -Phellandrene	3.69	Monoterpene
Limonene	2.90	Monoterpene
( <i>Z</i> )- $\beta$ -Ocimene	0.06	Monoterpene
( <i>E</i> )- $\beta$ -Ocimene	0.03	Monoterpene
$\gamma$ -Terpinene	2.05	Monoterpene
Unknown	0.01	Oxygenated monoterpene
<i>cis</i> -Linalool oxide (fur.)	0.01	Monoterpenic alcohol
<i>para</i> -Cymenene	0.01	Monoterpene
Terpinolene	0.06	Monoterpene
$\alpha$ -Pinene oxide	0.03	Monoterpenic ether
Linalool	0.03	Monoterpenic alcohol
<i>trans</i> -Pinocarveol	0.01	Monoterpenic alcohol
$\alpha$ -Terpineol	0.01	Monoterpenic alcohol
Myrtenol	tr	Monoterpenic alcohol
Verbenone	0.01	Monoterpenic ketone
Unknown	0.01	Unknown
<b>Consolidated total</b>	<b>99.79</b>	

tr: The compound has been detected below 0.005% of the total signal

Note: no correction factor was applied

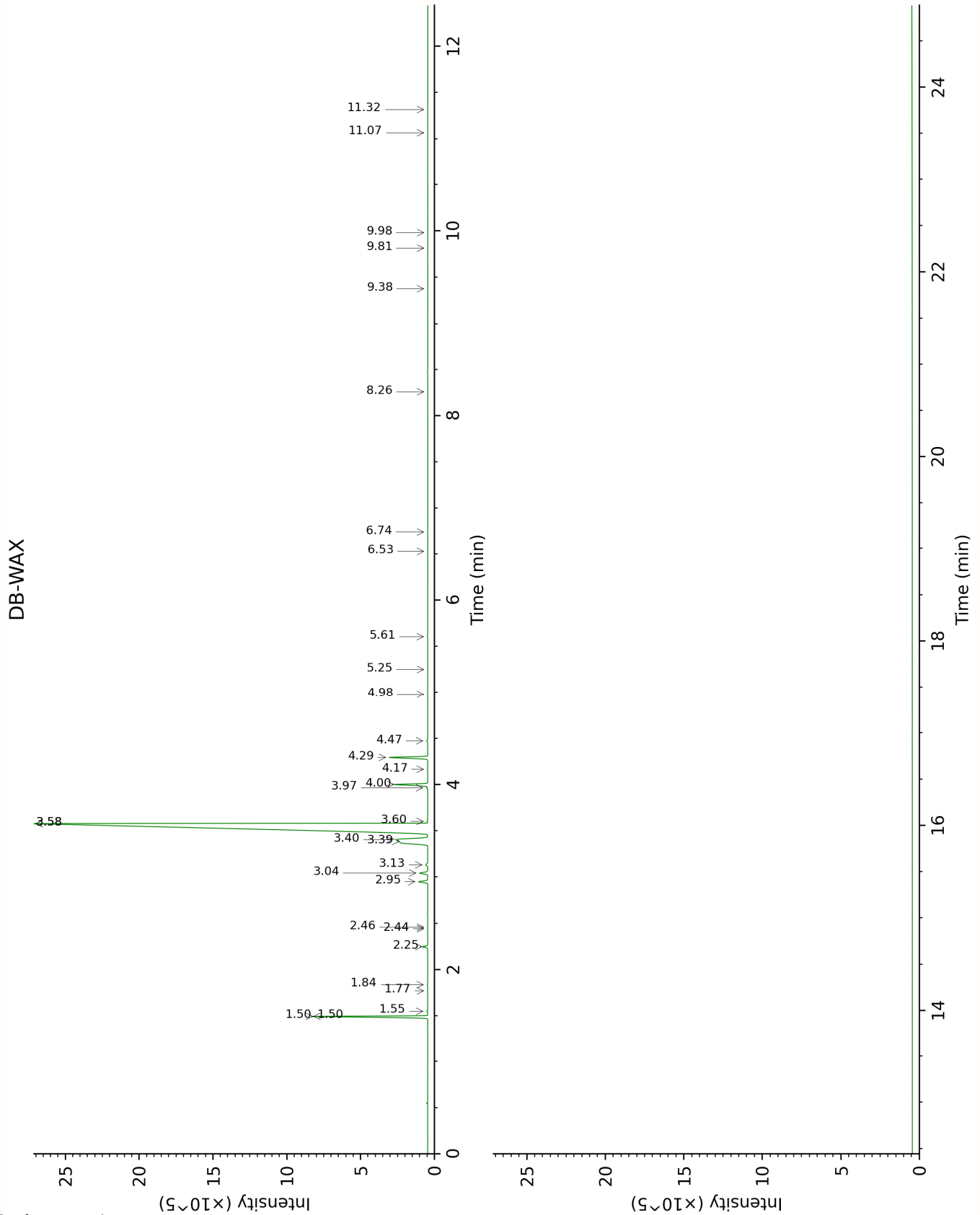
**About "consolidated" data:** The table above presents the breakdown of the sample volatile constituents after applying an algorithm to collapse data acquired from the multi-columns system of PhytoChemia into a single set of consolidated contents. In case of discrepancies between columns, the algorithm is set to prioritize data from the most standard DB-5 column, and smallest values so as to avoid overestimating individual content. This process is semi-automatic. Advanced users are invited to consult the "Full analysis data" table after the chromatograms in this report to access the full untreated data and perform their own calculations if needed.

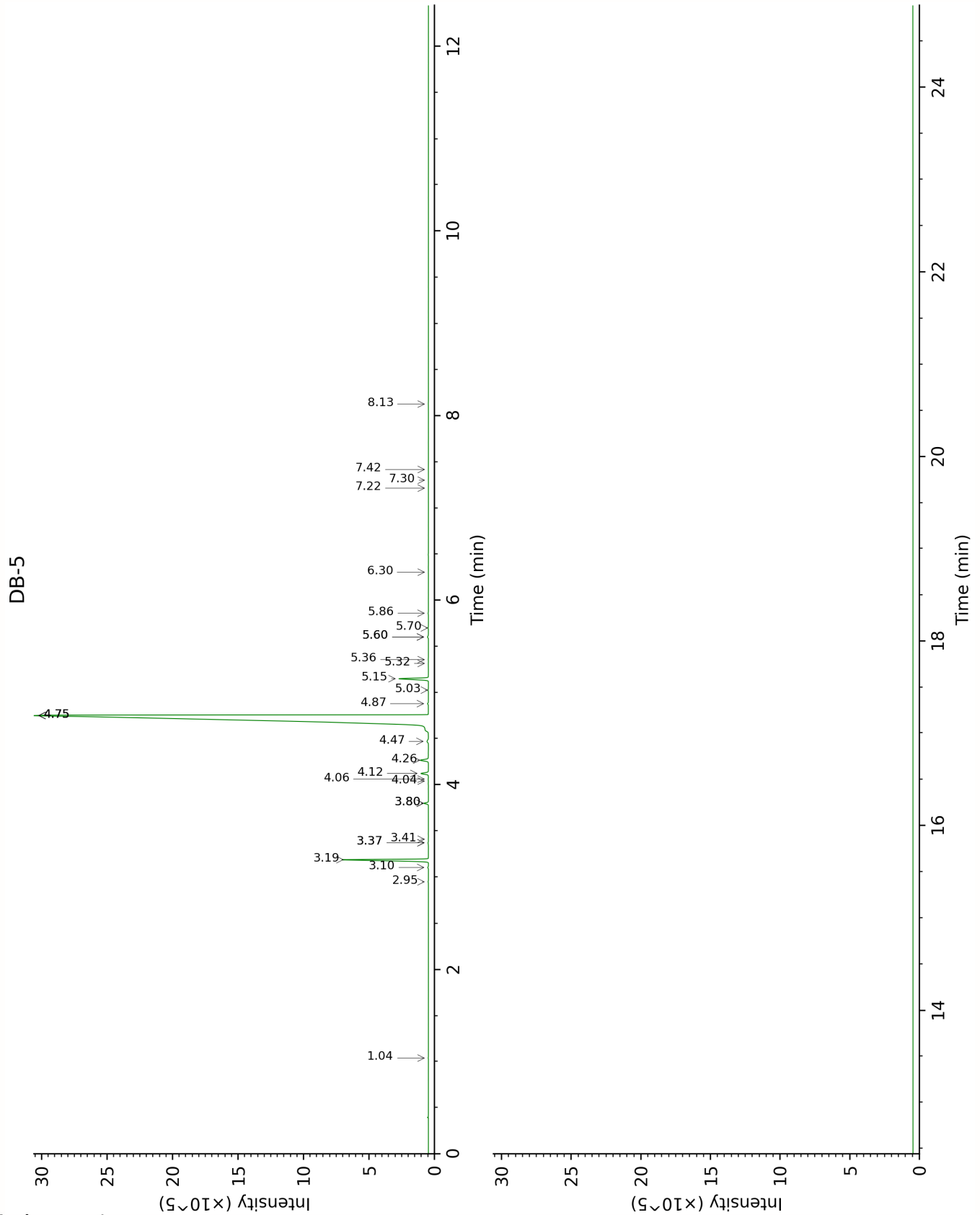
**Unknowns:** Unknown compounds' mass spectral data is presented in the "Full analysis data" table. The occurrence of unknown compounds is

to be expected in many samples, and does not denote particular problems unless noted otherwise in the conclusion.

**Bracketed value ([xx]):** A bracketed percent value indicate that two or more compound percentage could not be solved due to coelution.

This page was intentionally left blank. The following pages present the complete data of the analysis.





FULL ANALYSIS DATA

Isoamyl alcohol	Column DB-WAX			Column DB-5		
	3.60	1176.0	0.04	1.04	733.1	0.01
Hashishene	1.50*	993.8	[5.88]	2.95	916.2	0.02
α-Thujene	1.55	1001.1	0.04	3.10	926.4	0.05
α-Pinene	1.50*	993.8	[5.88]	3.19	932.0	5.86
α-Fenchene	1.77	1022.0	0.01	3.37*†	944.0	[0.03]
Camphene	1.84	1028.3	0.02	3.37*†	944.0	[0.03]
Thuja-2,4(10)-diene	2.46	1086.9	0.01	3.41	946.5	0.01
β-Pinene	2.25	1067.1	0.31	3.80*	972.0	[0.30]
Sabinene	2.44	1085.3	0.01	3.80*	972.0	[0.30]
6-Methyl-5-hepten-2-one	5.25	1294.7	tr	4.04	987.8	tr
<i>trans</i> -Dehydroxylinalool oxide	3.58*	1174.2	[80.75]	4.06	989.3	0.01
Myrcene	3.04	1133.7	0.57	4.12	993.3	0.58
α-Phellandrene	2.95	1126.6	0.63	4.26	1002.7	0.67
α-Terpinene	3.13	1140.3	0.17	4.47	1015.5	0.17
<i>para</i> -Cymene	4.29	1226.6	2.40	4.75*	1032.9	[89.83]
1,8-Cineole	3.58*	1174.2	[80.75]	4.75*	1032.9	[89.83]
β-Phellandrene	3.40	1161.0	3.69	4.75*	1032.9	[89.83]
Limonene	3.39	1159.6	2.90	4.75*	1032.9	[89.83]
( <i>Z</i> )-β-Ocimene	3.97	1203.3	0.06	4.87	1041.0	0.06
( <i>E</i> )-β-Ocimene	4.17	1217.5	0.03	5.03	1050.6	0.03
γ-Terpinene	4.00	1205.8	2.11	5.15	1058.3	2.05
Unknown PIMA I [m/z 79, 93 (60), 43 (40), 94 (35), 137 (33), 77 (26), 91 (20), 152 (18)]	4.98	1275.4	0.01	5.32	1068.6	0.01
<i>cis</i> -Linalool oxide (fur.)	6.74	1402.4	0.01	5.36	1071.2	0.01
<i>para</i> -Cymenene	6.53	1387.4	0.01	5.60*	1086.5	[0.08]
Terpinolene	4.47	1239.3	0.06	5.60*	1086.5	[0.08]
α-Pinene oxide	5.61	1321.5	0.03	5.70	1092.6	0.03
Linalool	8.26	1515.7	tr	5.86	1102.5	0.03
<i>trans</i> -Pinocarveol	9.38	1602.1	0.01	6.30	1130.8	0.01
α-Terpineol	9.98	1650.8	tr	7.22	1189.1	0.01
Myrtenol	11.07	1740.2	0.01	7.30	1194.6	tr
Verbenone	9.82	1637.4	0.01	7.42	1202.0	0.01
Unknown CALU IV [m/z 43, 97 (69), 107 (46), 41 (28),	11.32	1761.4	0.01	8.13	1249.1	0.01



55 (21), 109 (20)...					
Total reported	99.79%			99.89%	

\*: Two or more compounds are coeluting on this column

[xx]: Duplicate percentage due to coelutions, only the first one is taken into account in the consolidated total

†: Peaks apexes were resolved, but peaks overlapped and were summed for analysis

tr: The compound has been detected below 0.005% of total signal.

Note: no correction factor was applied

R.T.: Retention time (minutes)

R.I.: Retention index