

Laboratory Test Report

SAMPLE NAME : Organic Lavender Fine
CLIENT NAME : Plant Therapy
CLIENT LOT # : LM0108R
APRC LOT# : PT240422C

Column : ZB5 (60 m length × 0.25 mm inner diameter × 0.25 µm film thicknes
Instrument : Shimadzu GCMS-QP2010 Ultra
Carrier gas : Helium 80 psi
Temperature ramp : 2 degrees Celsius per minute up to 260-degree Celsius
Split ratio : 30:1
Sample preparation : 5% w/v solution with Dichloromethane

Interpretation on this sample

The analysis of this Lavender sample meets the expected chemical profile of authentic essential oil of *Lavandula angustifolia*.

Analyzed by : Dr Prabodh Satyal
Reviewed by : Ambika Poudel

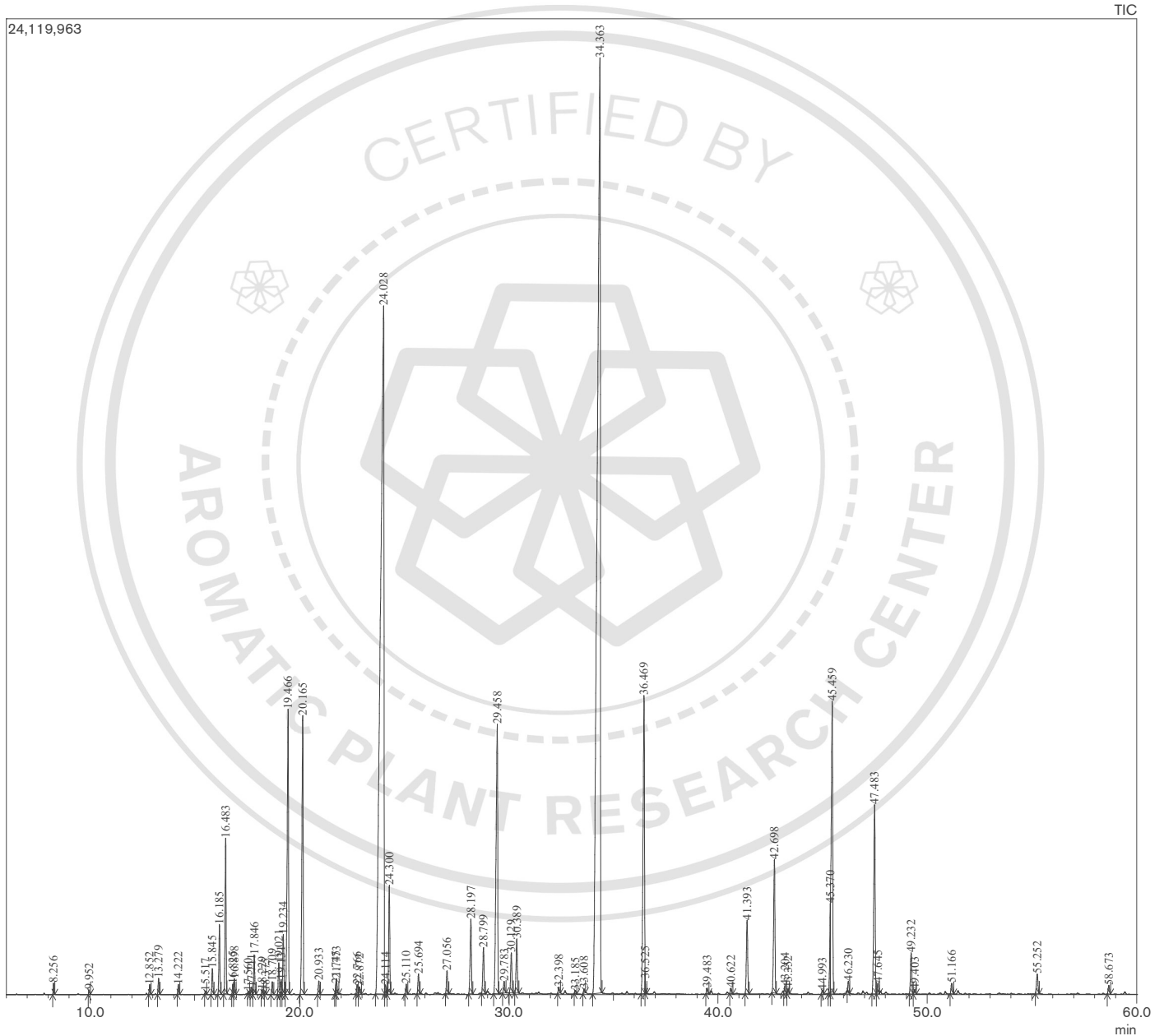
Issued Date : 4/23/2024

GCMS Analysis

Sample Information

Analyzed by : Dr. Prabodh Satyal
Analyzed : 4/23/2024 3:38:54 AM
Sample Type : Essential Oil
Sample Name : Organic Lavender Fine
Client Name : Plant Therapy
Client Lot# : LM0108R
APRC Lot# : PT240422C
Injection Volume : 0.30

Chromatogram



Peak Report

Peak#	R.Time	Name	Area%
1	8.256	1-Methoxy hexane	0.09
2	9.952	n-Hexanol	0.04
3	12.852	alpha-Thujene	0.10
4	13.279	alpha-Pinene	0.16
5	14.222	Camphene	0.10
6	15.517	Sabinene	0.03
7	15.845	1-Octen-3-ol	0.29
8	16.185	3-Octanone	0.77
9	16.483	Myrcene	1.75
10	16.825	Butyl butanoate	0.10
11	16.898	3-Octanol	0.18
12	17.560	alpha-Phellandrene	0.03
13	17.711	delta-3-Carene	0.08
14	17.846	Hexyl acetate	0.44
15	18.229	alpha-Terpinene	0.05
16	18.375	meta-Cymene	0.03
17	18.709	para-Cymene	0.14
18	19.021	Limonene	0.37
19	19.131	beta-Phellandrene	0.17
20	19.234	1,8-Cineole	0.70
21	19.466	cis-beta-Ocimene	4.08
22	20.165	trans-beta-Ocimene	3.89
23	20.933	gamma-Terpinene	0.16
24	21.745	cis-Sabinene hydrate	0.05
25	21.773	cis-Linalool oxide (furanoid)	0.19
26	22.766	Terpinolene	0.11
27	22.872	trans-Linalool oxide (furanoid)	0.10
28	24.028	Linalool	26.11
29	24.114	Hexyl propionate+Hotrienol	0.10
30	24.300	1-Octen-3-yl acetate	1.30
31	25.110	3-Octanol acetate	0.12
32	25.694	allo-Ocimene	0.24
33	27.056	Hexyl isobutyrate+Camphor	0.29
34	28.197	Lavandulol	1.04
35	28.799	Borneol	0.63
36	29.458	Terpinen-4-ol	4.79
37	29.783	Cryptone	0.16
38	30.129	Hexyl butanoate	0.54
39	30.389	alpha-Terpineol	0.74
40	32.398	Nerol	0.08
41	33.185	Hexyl 2-methyl butanoate	0.04
42	33.608	Cuminal	0.05
43	34.363	Linalyl acetate	31.61
44	36.469	Lavandulyl acetate	4.66
45	36.525	Bornyl acetate	0.06
46	39.483	Hexyl tiglate	0.07
47	40.622	alpha-Terpinyl acetate	0.07
48	41.393	Neryl acetate	1.04
49	42.698	Geranyl acetate	1.91
50	43.204	Hexyl hexanoate	0.10
51	43.352	7-epi-Sesquithujene	0.06
52	44.993	cis-alpha-Bergamotene	0.05
53	45.370	alpha-Santalene	0.63
54	45.459	beta-Caryophyllene	4.91
55	46.230	trans-alpha-Bergamotene	0.13
56	47.483	trans-beta-Farnesene	2.87
57	47.645	alpha-Humulene	0.16
58	49.232	Germacrene D	0.60
59	49.403	trans-beta-Bergamotene	0.07
60	51.166	gamma-Cadinene	0.15
61	55.252	Caryophyllene oxide	0.31
62	58.673	epi-alpha-Cadinol	0.12
			100.00