

Date : 2025-01-20

CERTIFICATE OF ANALYSIS - GC PROFILING

SAMPLE IDENTIFICATION

Internal code : 25A06-PTH03

Customer Identification : Organic Patchouli - Indonesia - PI0107R

Type : Essential Oil

Source : *Pogostemon cablin*

Customer : Plant Therapy

Checked and approved by:

Alexis St-Gelais, Ph. D., Chimiste 2013-174

Notes: This report may not be published, including online, without the written consent from Laboratoire PhytoChemia. This report is digitally signed, it is only considered valid if the digital signature is intact. The results only describe the samples that were submitted to the assays.

GAS CHROMATOGRAPHIC ANALYSIS

Method : PC-MAT-014 - Analysis of the composition of an essential oil or other volatile liquide by FAST GC-FID

✖ISO

Results : See analysis summary (next page)

Analyst : Sylvain Mercier, M. Sc., Chimiste 2014-005

Date : 2025-01-15

PHYSICOCHEMICAL DATA

Refractive index : 1.5092 ± 0.0003 (20 °C)

Method : PC-MAT-016 - Measure of the refractive index of a liquid.

Analyst : Cindy Caron B. Sc.

Date : 2025-01-06

CONCLUSION

No adulterant, contaminant or diluent has been detected using this method.

ANALYSIS SUMMARY - CONSOLIDATED CONTENTS

New readers of similar reports are encouraged to read table footnotes at least once.

Identification	%	Class
5-Methyl-2-hexanone	tr	Aliphatic ketone
α -Pinene	0.07	Monoterpene
β -Pinene	0.18	Monoterpene
Octen-3-ol	tr	Aliphatic alcohol
Octan-3-one	tr	Aliphatic ketone
Limonene	0.03	Monoterpene
Linalool	0.01	Monoterpenic alcohol
Unknown	0.02	Unknown
δ -Elemene	0.12	Sesquiterpene
α -Cubebene	0.01	Sesquiterpene
α -Copaene	0.02	Sesquiterpene
β -Patchoulene	2.37	Sesquiterpene
β -Bourbonene	0.01	Sesquiterpene
<i>cis</i> - β -Elemene	0.05	Sesquiterpene
β -Cubebene	0.01	Sesquiterpene
β -Elemene	1.05	Sesquiterpene
Cycloseychellene	0.59	Sesquiterpene
Isocaryophyllene	0.05	Sesquiterpene
α -Gurjunene	0.01	Sesquiterpene
β -Caryophyllene	2.99	Sesquiterpene
Seychellene	6.77	Sesquiterpene
α -Guaiene	12.31	Sesquiterpene
Unknown	0.23	Sesquiterpene
α -Humulene	2.10	Sesquiterpene
α -Patchoulene	3.14	Sesquiterpene
Patchoulene analog IV (Improperly reported as γ -patchoulene)	0.99	Sesquiterpene
δ -patchoulene	1.47	Sesquiterpene
9-epi- β -Caryophyllene	0.01	Sesquiterpene
Unknown	0.36	Sesquiterpene
Unknown	0.33	Sesquiterpene
Selina-4,11-diene	0.20	Sesquiterpene
β -Selinene	0.09	Sesquiterpene
Patchoulene analog II	0.31	Sesquiterpene
Unknown	0.24	Sesquiterpene
δ -Selinene	0.15	Sesquiterpene
Unknown	0.08	Sesquiterpene
α -Selinene	0.10	Sesquiterpene
Eudesma-2,4(15),11-triene	0.17	Sesquiterpene
Aciphyllene	2.81	Sesquiterpene

Pentadecane	0.18	Alkane
δ-Guaiene	17.47	Sesquiterpene
γ-Cadinene	0.21	Sesquiterpene
Nootkatene	0.04	Sesquiterpene
7-epi-α-Selinene	0.14	Sesquiterpene
Unknown	0.06	Sesquiterpene
Unknown	0.02	Oxygenated sesquiterpene
Unknown	0.04	Oxygenated sesquiterpene
Unknown	0.13	Oxygenated sesquiterpene
Unknown	0.10	Oxygenated sesquiterpene
Unknown	0.03	Oxygenated sesquiterpene
Norpatchoulenol	0.72	Norsesquiterpenic alcohol
Unknown	0.03	Oxygenated sesquiterpene
Unknown	0.05	Oxygenated sesquiterpene
Unknown	0.35	Oxygenated sesquiterpene
Caryophyllene oxide isomer	0.10	Sesquiterpenic ether
Caryophyllene oxide	0.46	Sesquiterpenic ether
Unknown	0.03	Oxygenated sesquiterpene
Unknown	0.56	Oxygenated sesquiterpene
Unknown	0.12	Oxygenated sesquiterpene
Hexadecane	0.05	Alkane
Humulene epoxide II	0.07	Sesquiterpenic ether
Unknown	0.20	Oxygenated sesquiterpene
Unknown	0.26	Oxygenated sesquiterpene
Unknown	0.28	Oxygenated sesquiterpene
Unknown	0.72	Oxygenated sesquiterpene
Caryophylladienol I	0.05	Sesquiterpenic alcohol
Caryophylladienol II	0.29	Sesquiterpenic alcohol
Hinesol	0.48	Sesquiterpenic alcohol
Pogostol	2.37	Sesquiterpenic alcohol
Patchoulol	29.32	Sesquiterpenic alcohol
Unknown	0.18	Oxygenated sesquiterpene
Unknown	0.26	Oxygenated sesquiterpene
Unknown	0.09	Oxygenated sesquiterpene
Unknown	0.07	Oxygenated sesquiterpene
Rotundone	0.26	Sesquiterpenic ketone
Unknown	0.12	Oxygenated sesquiterpene
Pogostone	1.23	Terpenic lactone
Unknown	0.18	Oxygenated sesquiterpene
Unknown	0.18	Oxygenated sesquiterpene
Unknown	0.13	Oxygenated sesquiterpene
Unknown	0.02	Oxygenated sesquiterpene
Unknown	0.02	Oxygenated sesquiterpene
Unknown	0.03	Oxygenated sesquiterpene
Unknown	0.05	Oxygenated sesquiterpene

Unknown	0.11	Oxygenated sesquiterpene
Unknown	0.08	Oxygenated sesquiterpene
Unknown	0.04	Oxygenated sesquiterpene
Unknown	0.04	Oxygenated sesquiterpene
Unknown	0.03	Oxygenated sesquiterpene
Unknown	0.04	Oxygenated sesquiterpene
Unknown	0.07	Oxygenated sesquiterpene
Unknown	0.02	Oxygenated sesquiterpene
Unknown	0.03	Oxygenated sesquiterpene
Corymbolone	0.06	Sesquiterpenic alcohol
Phytol	0.02	Diterpenic alcohol
Consolidated total	97.73	

tr: The compound has been detected below 0.005% of the total signal

Note: no correction factor was applied

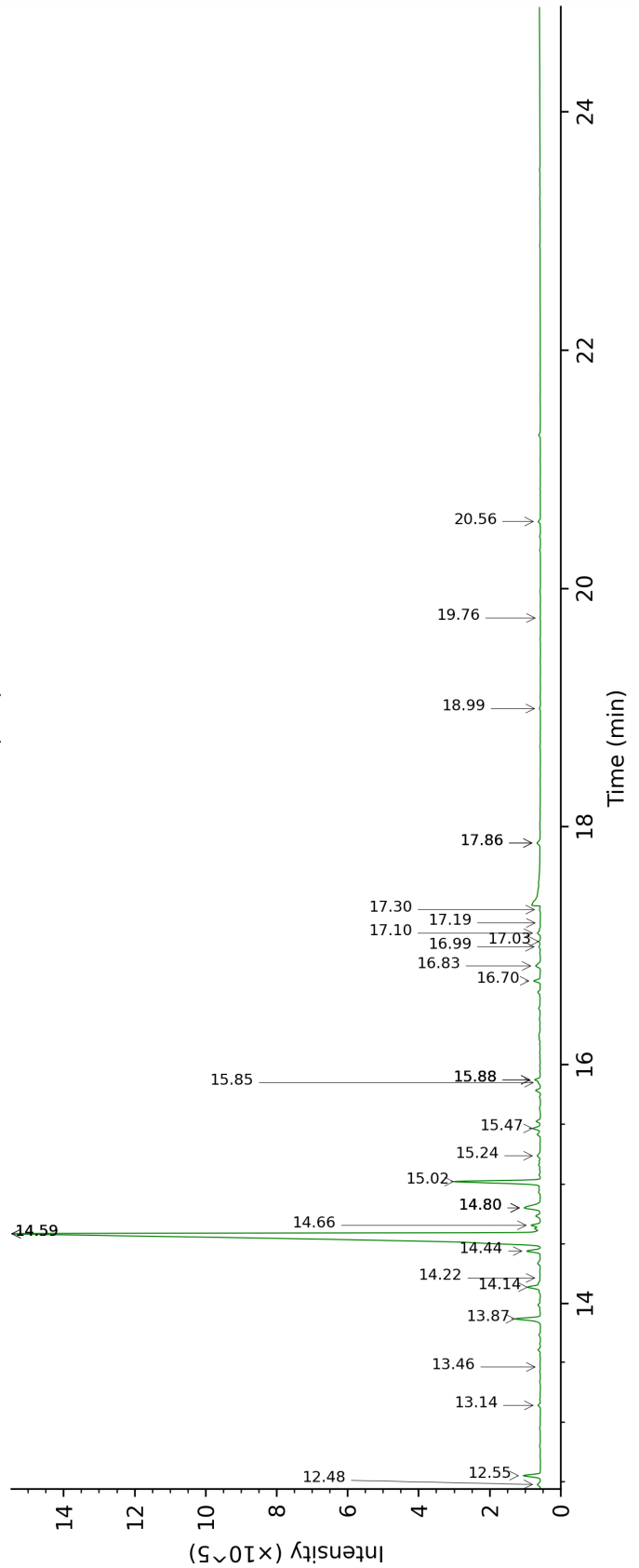
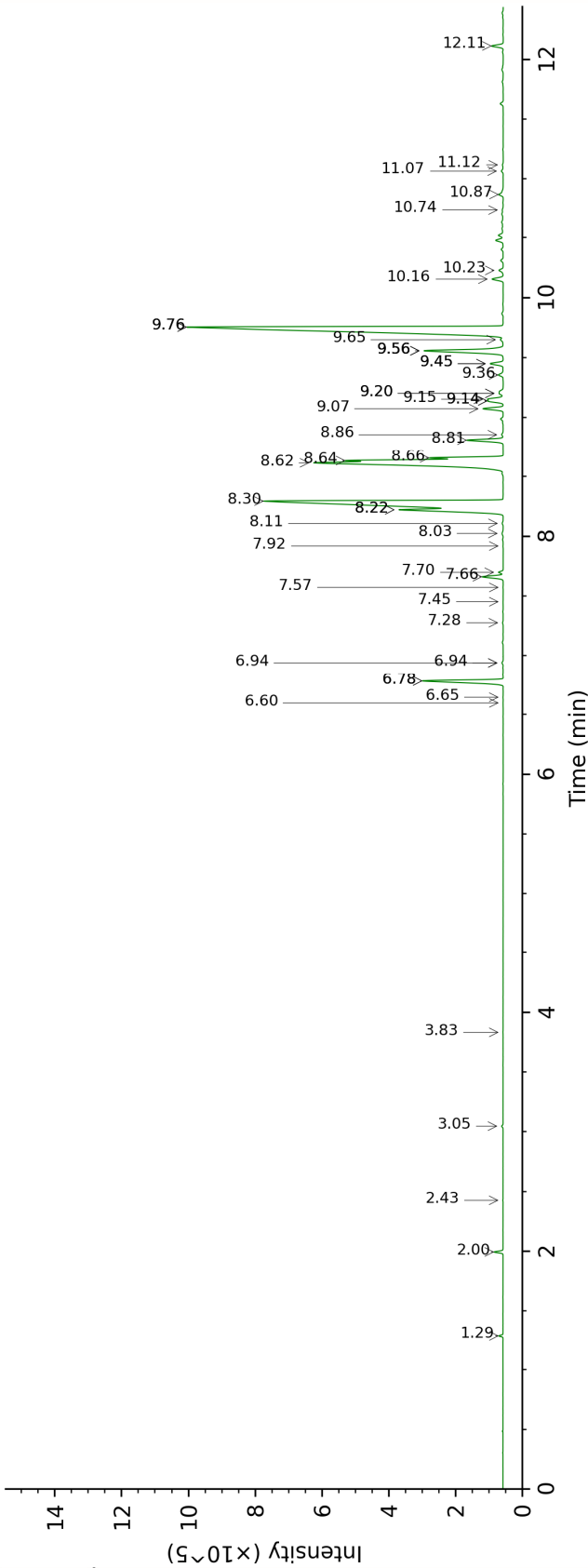
About "consolidated" data: The table above presents the breakdown of the sample volatile constituents after applying an algorithm to collapse data acquired from the multi-columns system of PhytoChemia into a single set of consolidated contents. In case of discrepancies between columns, the algorithm is set to prioritize data from the most standard DB-5 column, and smallest values so as to avoid overestimating individual content. This process is semi-automatic. Advanced users are invited to consult the "Full analysis data" table after the chromatograms in this report to access the full untreated data and perform their own calculations if needed.

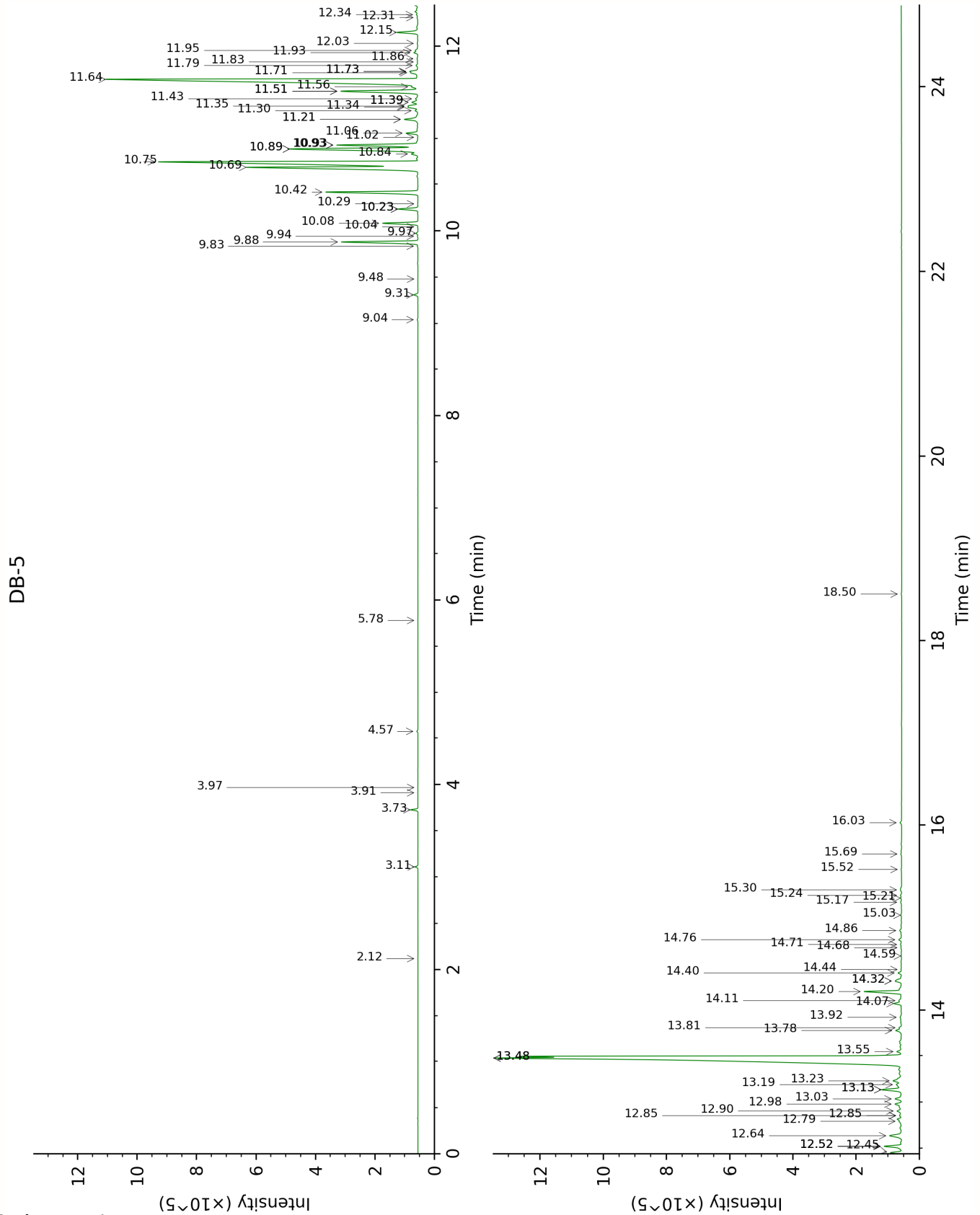
Unknowns: Unknown compounds' mass spectral data is presented in the "Full analysis data" table. The occurrence of unknown compounds is to be expected in many samples, and does not denote particular problems unless noted otherwise in the conclusion.

Bracketed value ([xx]): A bracketed percent value indicate that two or more compound percentage could not be solved due to coelution.

This page was intentionally left blank. The following pages present the complete data of the analysis.

DB-WAX





FULL ANALYSIS DATA

5-Methyl-2-hexanone	Column DB-WAX			Column DB-5		
	2.43	1106.0	0.01	2.12	854.7	tr
α -Pinene	1.29	988.7	0.07	3.11	930.5	0.07
β -Pinene	2.00	1063.9	0.18	3.73	971.5	0.18
Octen-3-ol	6.60	1418.5	0.01	3.91	983.7	tr
Octan-3-one	3.83	1217.0	0.01	3.97	987.5	tr
Limonene	3.05	1155.6	0.03	4.57	1026.5	0.03
Linalool	7.92	1517.8	0.01	5.78	1102.2	0.01
Unknown POCA I [m/z 159, 117 (68), 132 (55), 200 (35)]	6.94*	1444.0	[0.04]	9.04	1316.7	0.02
δ -Elemene	6.78*	1432.3	[2.50]	9.31	1335.5	0.12
α -Cubebene	6.65	1422.1	0.01	9.48	1347.6	0.01
α -Copaene	6.94*	1444.0	[0.04]	9.83	1372.5	0.02
β -Patchoulene	6.78*	1432.3	[2.50]	9.88	1375.7	2.37
β -Bourbonene	7.28	1469.1	0.02	9.94	1380.1	0.01
<i>cis</i> - β -Elemene	8.11	1532.5	0.04	9.97	1382.3	0.05
β -Cubebene	7.57	1491.1	0.01	10.04	1387.3	0.01
β -Elemene	8.22*	1541.4	[3.62]	10.08	1390.0	1.05
Cycloseychellene	7.66	1497.8	0.59	10.23*	1400.7	[0.61]
Isocaryophyllene	8.02	1526.0	0.05	10.23*	1400.7	[0.61]
α -Gurjunene	7.45	1482.2	0.01	10.29	1404.7	0.01
β -Caryophyllene	8.22*	1541.4	[3.62]	10.42	1414.2	2.99
Seychellene	8.62	1572.0	8.36	10.69	1434.7	6.77
α -Guaiene	8.30	1547.0	13.02	10.75	1439.1	12.31
Unknown POCA III [m/z 91, 93 (98), 79 (82), 81 (82), 105 (71), 107 (70)... 204 (38)]	9.08	1608.1	0.55	10.84	1445.4	0.23
α -Humulene	9.14†	1613.4	0.41	10.89*	1449.4	[5.24]
α -Patchoulene	8.64	1573.5	3.14	10.89*	1449.4	[5.24]
Patchoulene analog IV (Improperly reported as γ - patchoulene)	8.81	1587.2	0.99	10.93*	1452.6	[2.69]
δ -patchoulene	8.66	1575.2	1.47	10.93*	1452.6	[2.69]
9-epi- β - Caryophyllene	9.20*	1618.5	[0.21]	11.02	1458.8	0.01
Unknown POCA IV [m/z 159, 91 (88), 93 (72), 79	9.15*†	1614.5	[0.36]	11.06	1462.1	0.36

(69), 105 (68), 41 (66), 81 (54), 202? (50)...						
Unknown POCA V [m/z 147, 93 (87), 107 (77), 105 (77), 91 (73), 79 (63)... 204 (21)]	9.14†	1613.4	0.41	11.21*	1473.3	[0.53]
Selina-4,11-diene	9.20*	1618.5	[0.21]	11.21*	1473.3	[0.53]
β-Selinene	9.65	1654.9	0.09	11.30	1480.3	0.09
Patchoulene analog II	9.56*	1647.4	[2.85]	11.34	1483.1	0.31
Unknown POCA VI [m/z 79, 107 (99), 91 (88), 93 (86), 81 (78), 105 (73), 41 (73)... 204? (12)]	9.45*	1638.6	[0.40]	11.35	1484.0	0.24
δ-Selinene	9.45*	1638.6	[0.40]	11.39*	1487.0	[0.23]
Unknown POCA VII [m/z 161, 189 (96), 91 (74), 204 (73), 105 (69), 41 (52)]	9.56*	1647.4	[2.85]	11.39*	1487.0	[0.23]
α-Selinene	9.76*	1663.4	[17.61]	11.43	1489.8	0.10
Eudesma- 2,4(15),11-triene	10.87	1756.5	0.17	11.51*	1495.9	[2.98]
Aciphyllene	9.56*	1647.4	[2.85]	11.51*	1495.9	[2.98]
Pentadecane	7.70	1500.7	0.11	11.56	1499.5	0.18
δ-Guaiene	9.76*	1663.4	[17.61]	11.64	1505.6	17.47
γ-Cadinene	10.16	1695.9	0.35	11.71	1511.2	0.21
Nootkatene	10.74	1745.4	0.04	11.73*	1512.3	[0.24]
7-epi-α-Selinene	10.23	1702.0	0.14	11.73*	1512.3	[0.24]
Unknown POCA XLV [m/z 159, 91 (81), 117 (68), 131 (51), 105 (46)... 202 (37)]	9.36	1631.0	0.15	11.79	1517.4	0.06
Unknown POCA IX [m/z 41, 67 (95), 93 (92), 107 (91), 55 (77), 81 (77), 79 (73)... 205 (17)...	11.12	1777.6	0.02	11.83	1520.4	0.02
Unknown POCA X	11.07	1773.1	0.06	11.86	1523.2	0.04

[m/z 161, 119 (92), 91 (69), 105 (52), 145 (49)... 218 (6)]						
Unknown POCA XI [m/z 91, 105 (98), 108 (83), 93 (82), 133 (79), 77 (64), 79 (57), 41 (56), 145 (55)... 218? (5)]				11.93	1528.3	0.13
Unknown POCA XII [m/z 91, 105 (78), 93 (77), 107 (71), 79 (64), 41 (63), 77 (63), 145 (60)... 218 (17)]				11.95	1530.2	0.10
Unknown POCA XIII [m/z 145, 131 (91), 91 (86), 105 (68), 146 (66), 43 (54)... 220? (5)]				12.03	1536.1	0.03
Norpatchoulénol	13.87	2027.8	0.75	12.15	1545.5	0.72
Unknown POCA XIV [m/z 191, 159 (66), 133 (53), 91 (45), 41 (42), 177 (35), 105 (33), 220 (32)]	13.46	1988.5	0.01	12.31	1558.0	0.03
Unknown POCA XV [m/z 41, 67 (90), 55 (87), 79 (85), 107 (84), 81 (84), 93 (84), 121 (77), 91 (74)... 220 (7)]				12.34	1560.5	0.05
Unknown POCA XVI [m/z 43, 107 (94), 81 (71), 41 (63), 67 (58), 111 (58), 93 (55), 83 (54)... 205 (8), 220 (1)]	12.11	1865.0	0.32	12.45	1569.4	0.35
Caryophyllène oxide isomer	12.48	1897.4	0.10	12.52*	1574.8	[0.61]

Caryophyllene oxide	12.55	1904.4	0.46	12.52*	1574.8	[0.61]
Unknown POCA XIV isomer	14.22	2060.7	0.03	12.52*	1574.8	[0.61]
Unknown POCA XVII [m/z 43, 79 (44), 81 (41), 93 (40), 91 (40)... 220 (5)]	14.14	2053.2	0.40	12.64	1583.8	0.56
Unknown POCA XVIII [m/z 43, 105 (77), 91 (71), 93 (68), 41 (62), 107 (6)... 205 (41), 220 (7)]	14.44	2082.3	0.37	12.79	1596.1	0.12
Hexadecane	8.86	1590.8	0.05	12.85*	1600.9	[0.08]
Humulene epoxide II	13.14	1958.8	0.07	12.85*	1600.9	[0.08]
Unknown POCA XIX [m/z 43, 161 (73), 91 (53), 95 (52), 79 (46), 119 (45)... 205 (29), 220? (1)]	14.59*	2096.4	[29.45]	12.90	1604.8	0.20
Unknown POCA XX [m/z 41, 91 (92), 55 (81), 93 (81), 79 (74), 43 (71), 95 (68), 123 (65)... 220 (17)]	14.66	2103.5	0.24	12.98	1611.0	0.26
Unknown POCA XXI [m/z 43, 79 (41), 93 (39), 41 (39), 91 (38), 81 (36)... 220 (3)]	14.80*	2118.0	[0.74]	13.03	1615.7	0.28
Unknown POCA XXII [m/z 41, 55 (92), 95 (80), 81 (76), 109 (76), 67 (66), 125 (65)... 220 (12)]	14.59*	2096.4	[29.45]	13.13*	1623.9	[0.77]
Caryophylladienol I	15.85	2223.8	0.05	13.13*	1623.9	[0.77]
Caryophylladienol II	15.88*	2226.3	[0.17]	13.19	1628.5	0.29

Hinesol	14.80*	2118.0	[0.74]	13.23	1631.8	0.48
Pogostol	15.02	2140.0	2.37	13.48*	1652.1	[31.69]
Patchoulol	14.59*	2096.4	[29.45]	13.48*	1652.1	[31.69]
Unknown POCA XXIII [m/z 175, 218 (59), 133 (49), 91 (43), 41 (38), 147 (36)]	14.80*	2118.0	[0.74]	13.55	1657.9	0.18
Unknown POCA XXV [m/z 95, 107 (99), 41 (85), 93 (82), 91 (82), 109 (71), 105 (71), 105 (71), 108 (66)... 220 (29)]				13.78	1677.4	0.26
Unknown POCA XXVI [m/z 91, 41 (100), 107 (98), 108 (95), 95 (87), 93 (87), 105 (85), 79 (77), 119 (72)... 220? (15)]	15.88*	2226.3	[0.17]	13.81	1679.9	0.09
Unknown POCA XXVII [m/z 43, 41 (95), 97 (89), 109 (71), 55 (71), 107 (70), 95 (69), 110 (65)... 222 (5)]	15.24	2161.5	0.13	13.92	1689.2	0.07
Rotundone	15.47	2184.4	0.23	14.07	1701.5	0.26
Unknown POCA XXVIII [m/z 43, 41 (82), 137 (78), 109 (76), 95 (75), 91 (72), 55 (67)... 220? (14)]				14.10	1704.1	0.12
Pogostone				14.20	1712.6	1.23
Unknown POCA XXIX [m/z 107, 93 (87), 41 (83), 81 (82), 67 (80), 55 (76)... 204 (53), 207 (34), 222 (9)]	16.70	2313.1	0.18	14.32*	1722.5	[0.32]
Unknown POCA XXX [m/z 83, 43 (85), 55 (39), 41	16.83	2326.5	0.18	14.32*	1722.5	[0.32]

(29), 121 (27), 120 (25)... 218 (3)] Unknown POCA XXXI [m/z 133, 148 (68), 147 (59), 91 (56), 79 (45), 105 (44)... 218 (8)]	16.99	2343.7	0.04	14.40	1730.1	0.13
Unknown POCA XLIX [m/z 91, 108 (86), 107 (85), 93 (80), 120 (75), 105 (71), 95 (72)... 218 (37)]	15.88*	2226.3	[0.17]	14.44	1733.3	0.02
Unknown POCA XXXII [m/z 43, 83 (93), 55 (42), 41 (37), 121 (34), 111 (28)... 222? (1)]	17.30	2377.2	0.03	14.59	1746.0	0.02
Unknown POCA XXXIII [m/z 134, 107 (96), 91 (84), 93 (78), 79 (77), 41 (74), 43 (66), 77 (65)...]	17.19	2365.2	0.01	14.68	1753.8	0.03
Unknown POCA XXXIV [m/z 43, 191 (68), 41 (62), 91 (51), 95 (49), 110 (44)... 234 (22)]				14.71	1756.8	0.05
Unknown POCA XXXV [m/z 91, 105 (88), 95 (79), 93 (78), 81 (72), 79 (66)... 205 (33), 220 (7)...]				14.76	1761.2	0.11
Unknown POCA XXXVI [m/z 149, 131 (54), 105 (48), 91 (46), 41 (30), 93 (27)... 218 (23)]	17.10	2356.0	0.09	14.86	1769.8	0.08
Unknown POCA XXXVII [m/z 43, 95 (58), 67 (50), 41 (47), 55 (38), 109	17.86*	2439.9	[0.14]	15.03	1784.3	0.04

(37)... 221 (9)... 236? (3)]						
Unknown POCA XXXVIII [m/z 219, 43 (67), 91 (46), 79 (42), 41 (41), 55 (36)... 234 (6)]	17.86*	2439.9	[0.14]	15.17	1796.4	0.04
Unknown POCA XL [m/z 43, 91 (77), 79 (74), 109 (73), 110 (71)... 218 (52), 234? (1)]				15.21	1800.3	0.03
Unknown POCA XXXIX [m/z 43, 91 (43), 41 (37), 79 (32), 219 (31)... 234 (14)]				15.24	1802.8	0.04
Unknown POCA XLII [m/z 91, 41 (79), 43 (74), 79 (72), 105 (65), 77 (64), 147 (64), 93 (61)... 218 (26), 234 (14)]	17.03	2348.4	0.04	15.30	1808.2	0.07
Unknown POCA XLIII [m/z 43, 69 (60), 41 (55), 55 (40), 95 (33), 163 (27)... 234 (17)]	19.76	2658.3	0.01	15.52	1828.3	0.02
Unknown POCA XLIV [m/z 41, 110 (77), 55 (75), 69 (74), 43 (74), 95 (71), 97 (71), 123 (71), 67 (63), 136 (56)... 236? (7)]	20.56	2756.6	0.07	15.69	1843.5	0.03
Corymbolone				16.03	1874.3	0.06
Phytol	18.99	2567.8	0.03	18.50	2113.8	0.02
Total reported		94.03%			97.92%	

*: Two or more compounds are coeluting on this column

[xx]: Duplicate percentage due to coelutions, only the first one is taken into account in the consolidated total

†: Peaks apexes were resolved, but peaks overlapped and were summed for analysis

tr: The compound has been detected below 0.005% of total signal.

Essential Oil, *Pogostemon cablin*
Internal code: 25A06-PTH03

Organic Patchouli - Indonesia - PI0107R

Report prepared for:
Plant Therapy

Note: no correction factor was applied

R.T.: Retention time (minutes)

R.I.: Retention index