

Date : 2023-11-10

CERTIFICATE OF ANALYSIS - GC PROFILING

SAMPLE IDENTIFICATION

Internal code : 23K03-PTH05

Customer Identification : Tangerine - USA - T10112R

Type : Essential Oil

Source : *Citrus reticulata* cv. Tangerine

Customer : Plant Therapy

Checked and approved by:

Alexis St-Gelais, Ph. D., Chimiste 2013-174

Notes: This report may not be published, including online, without the written consent from Laboratoire PhytoChemia. This report is digitally signed, it is only considered valid if the digital signature is intact. The results only describe the samples that were submitted to the assays.

GAS CHROMATOGRAPHIC ANALYSIS

Method : PC-MAT-014 - Analysis of the composition of an essential oil or other volatile liquide by FAST GC-FID

***ISO**

Results : See analysis summary (next page)

Analyst : Sylvain Mercier, M. Sc., Chimiste 2014-005

Date : 2023-11-06

PHYSICOCHEMICAL DATA

Refractive index : 1.4746 ± 0.0003 (20 °C)

Method : PC-MAT-016 - Measure of the refractive index of a liquid.

Analyst : Cindy Caron B. Sc.

Date : 2023-11-06

CONCLUSION

No adulterant, contaminant or diluent has been detected using this method.

ANALYSIS SUMMARY - CONSOLIDATED CONTENTS

New readers of similar reports are encouraged to read table footnotes at least once.

Identification	%	Class
α -Thujene	0.04	Monoterpene
α -Pinene	0.51	Monoterpene
Camphene	0.01	Monoterpene
β -Pinene	0.11	Monoterpene
Sabinene	0.23	Monoterpene
Myrcene	1.65	Monoterpene
Pseudolimonene	0.01	Monoterpene
Octanal	0.10	Aliphatic aldehyde
α -Phellandrene	0.03	Monoterpene
Δ^3 -Carene	0.02	Monoterpene
α -Terpinene	0.02	Monoterpene
<i>para</i> -Cymene	0.11	Monoterpene
Limonene	92.34	Monoterpene
β -Phellandrene	0.25	Monoterpene
(<i>Z</i>)- β -Ocimene	0.01	Monoterpene
(<i>E</i>)- β -Ocimene	0.11	Monoterpene
γ -Terpinene	0.91	Monoterpene
<i>cis</i> -Sabinene hydrate	0.01	Monoterpenic alcohol
Octanol	0.04	Aliphatic alcohol
Terpinolene	0.06	Monoterpene
Linalool	0.54	Monoterpenic alcohol
Nonanal	0.04	Aliphatic aldehyde
<i>trans-para</i> -Mentha-2,8-dien-1-ol	0.02	Monoterpenic alcohol
<i>cis</i> -Limonene oxide	0.02	Monoterpenic ether
<i>cis-para</i> -Mentha-2,8-dien-1-ol	0.01	Monoterpenic alcohol
<i>trans</i> -Limonene oxide	0.02	Monoterpenic ether
Citronellal	0.05	Monoterpenic aldehyde
Terpinen-4-ol	0.01	Monoterpenic alcohol
α -Terpineol	0.13	Monoterpenic alcohol
Unknown	0.01	Unknown
Unknown	0.01	Unknown
Decanal	0.14	Aliphatic aldehyde
Octyl acetate	0.04	Aliphatic ester
<i>trans</i> -Carveol	0.02	Monoterpenic alcohol
Nerol	0.04	Monoterpenic alcohol
<i>cis</i> -Carveol	0.03	Monoterpenic alcohol
Citronellol	0.01	Monoterpenic alcohol
Neral	0.01	Monoterpenic aldehyde
Carvone	0.03	Monoterpenic ketone
Geraniol	0.01	Monoterpenic alcohol

(2E)-Decenal	0.01	Aliphatic aldehyde
Perillaldehyde	0.02	Monoterpenic aldehyde
Geranial	0.03	Monoterpenic aldehyde
Limonen-10-ol	0.01	Monoterpenic alcohol
Thymol	0.02	Monoterpenic alcohol
Undecanal	0.01	Aliphatic aldehyde
<i>para</i> -Mentha-1,8-diene-4-hydroperoxide	0.02	Monoterpenic peroxide
Limonene <i>trans</i> -glycol	0.01	Monoterpenic alcohol
Unknown	0.02	Sesquiterpene
Neryl acetate	0.06	Monoterpenic ester
α -Copaene	0.04	Sesquiterpene
Geranyl acetate	0.04	Monoterpenic ester
β -Cubebene	tr	Sesquiterpene
β -Elemene	0.03	Sesquiterpene
Dodecanal	0.04	Aliphatic aldehyde
β -Caryophyllene	0.04	Sesquiterpene
β -Copaene	0.01	Sesquiterpene
<i>trans</i> - α -Bergamotene	0.01	Sesquiterpene
α -Humulene	0.02	Sesquiterpene
(<i>E</i>)- β -Farnesene	0.02	Sesquiterpene
Germacrene D	0.05	Sesquiterpene
Valencene	0.06	Sesquiterpene
α -Muurolene	0.01	Sesquiterpene
γ -Cadinene	0.04	Sesquiterpene
δ -Cadinene	0.05	Sesquiterpene
α -Elemol	0.02	Sesquiterpenic alcohol
(<i>E</i>)-Nerolidol	0.01	Sesquiterpenic alcohol
Germacrene D-4-ol	0.01	Sesquiterpenic alcohol
Caryophyllene oxide	0.01	Sesquiterpenic ether
Tetradecanal	0.01	Aliphatic aldehyde
β -Sinensal	0.03	Sesquiterpenic aldehyde
α -Sinensal	0.04	Sesquiterpenic aldehyde
<i>meta</i> -Camphorene	0.06	Diterpene
Palmitic acid	0.03	Aliphatic acid
Linoleic acid	0.02	Aliphatic acid
Oleic acid	0.03	Aliphatic acid
Stearic acid	0.05	Aliphatic acid
Tetramethoxyflavone isomer	0.02	Flavonoid
Tangeretin	0.19	Flavonoid
3,3',4',5,6,7,8-Heptamethoxyflavone	0.08	Flavonoid
Nobiletin	0.12	Flavonoid
Consolidated total	99.17	

tr: The compound has been detected below 0.005% of the total signal

Note: no correction factor was applied

About "consolidated" data: The table above presents the breakdown of the sample volatile constituents after applying an algorithm to collapse data acquired from the multi-columns system of PhytoChemia into a single set of consolidated contents. In case of discrepancies

Laboratoire
PhytoChemia

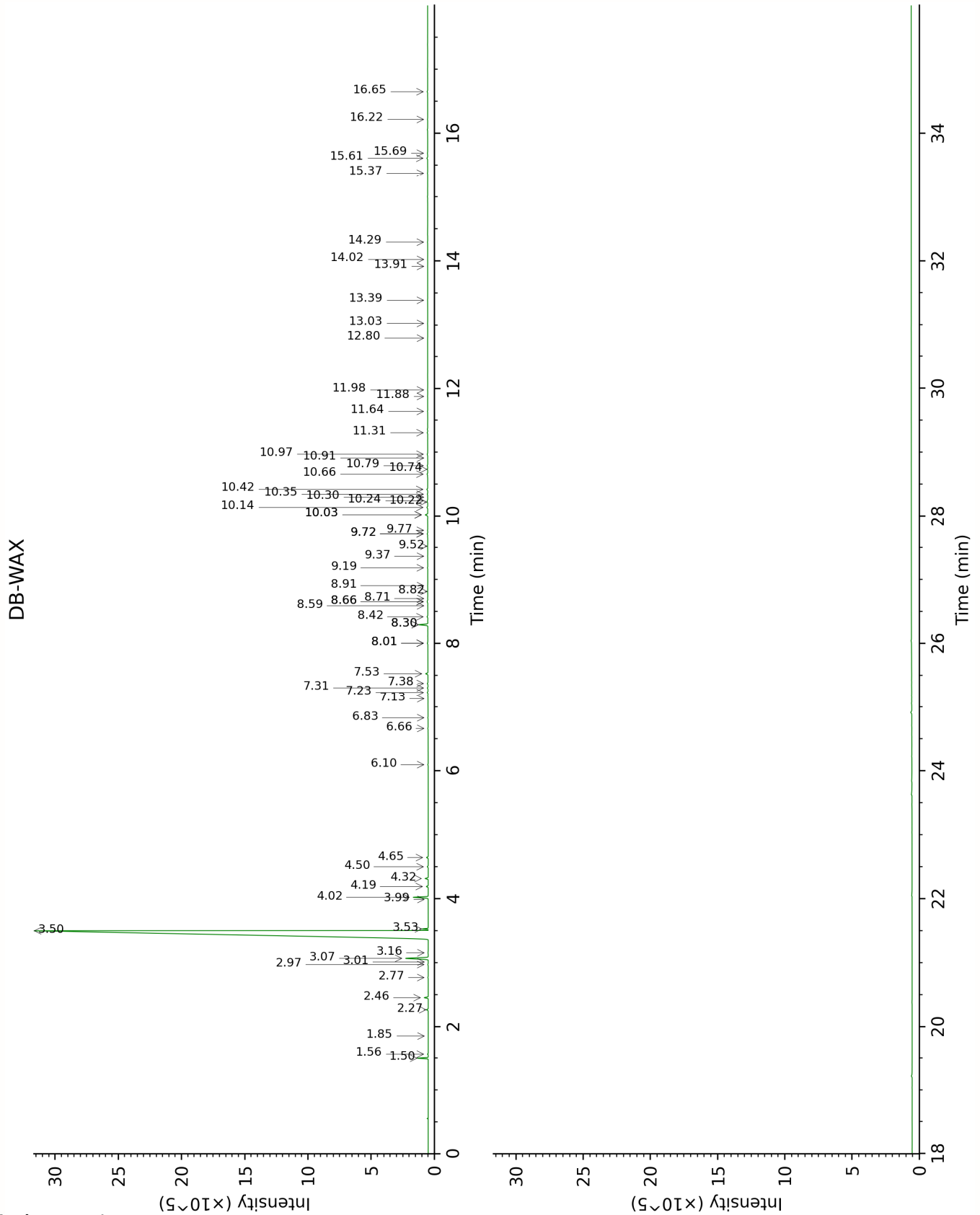
Plus que des analyses... des conseils

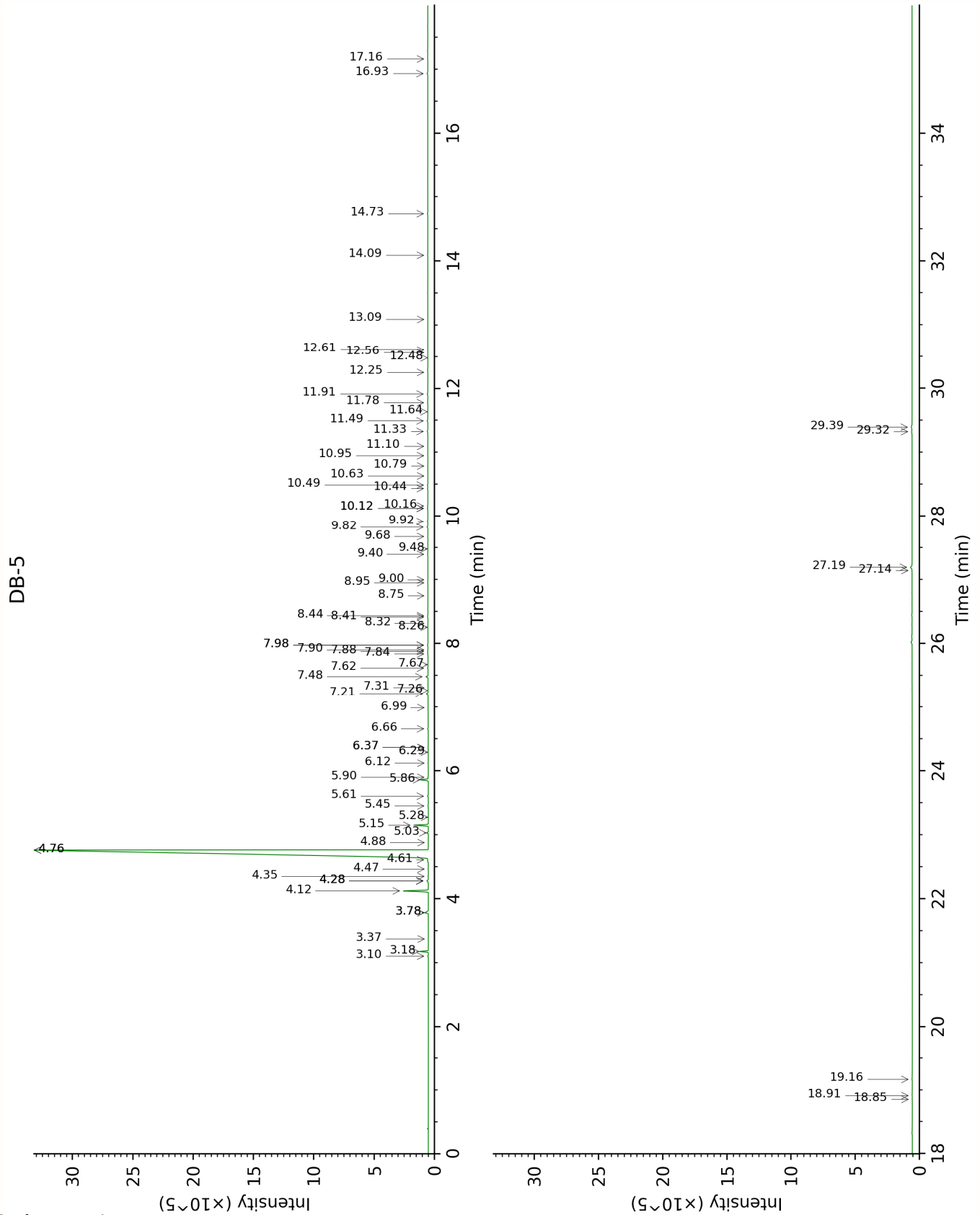
between columns, the algorithm is set to prioritize data from the most standard DB-5 column, and smallest values so as to avoid overestimating individual content. This process is semi-automatic. Advanced users are invited to consult the "Full analysis data" table after the chromatograms in this report to access the full untreated data and perform their own calculations if needed.

Unknowns: Unknown compounds' mass spectral data is presented in the "Full analysis data" table. The occurrence of unknown compounds is to be expected in many samples, and does not denote particular problems unless noted otherwise in the conclusion.

Bracketed value ([xx]): A bracketed percent value indicate that two or more compound percentage could not be solved due to coelution.

This page was intentionally left blank. The following pages present the complete data of the analysis.





FULL ANALYSIS DATA

α-Thujene	Column DB-WAX			Column DB-5		
	1.56	1000.7	0.03	3.10	926.8	0.04
α -Pinene	1.50	992.5	0.51	3.18	931.6	0.51
Camphene	1.86	1028.4	tr	3.37	944.4	0.01
β -Pinene	2.27	1067.2	0.11	3.78*	971.4	[0.33]
Sabinene	2.46	1084.9	0.23	3.78*	971.4	[0.33]
Myrcene	3.07	1133.8	1.67	4.12	993.7	1.65
Pseudolimonene	3.01	1129.6	0.01	4.28*	1004.0	[0.14]
Octanal	4.65	1249.2	0.10	4.28*	1004.0	[0.14]
α -Phellandrene	2.97	1126.5	0.03	4.28*	1004.0	[0.14]
Δ^3 -Carene	2.77	1111.2	0.03	4.35	1008.5	0.02
α -Terpinene	3.16	1140.4	0.03	4.47	1015.6	0.02
<i>para</i> -Cymene	4.32	1226.0	0.19	4.61	1024.7	0.11
Limonene	3.50	1166.4	92.34	4.76*	1034.1	[92.53]
β -Phellandrene	3.53	1168.6	0.25	4.76*	1034.1	[92.53]
(<i>Z</i>)- β -Ocimene	3.99	1203.0	0.01	4.88	1041.4	0.01
(<i>E</i>)- β -Ocimene	4.19	1217.2	0.11	5.03	1050.9	0.11
γ -Terpinene	4.02	1205.3	0.90	5.15	1058.3	0.91
<i>cis</i> -Sabinene hydrate	7.13	1429.4	0.02	5.28	1066.1	0.01
Octanol	8.42	1525.1	0.05	5.45	1077.1	0.04
Terpinolene	4.50	1239.0	0.06	5.60	1086.7	0.06
Linalool	8.30*	1515.7	[0.56]	5.86	1102.7	0.54
Nonanal	6.10	1355.1	0.03	5.90	1105.1	0.04
<i>trans-para</i> -Mentha-2,8-dien-1-ol	9.19	1583.8	0.02	6.12	1119.2	0.02
<i>cis</i> -Limonene oxide	6.66	1395.2	0.02	6.29	1130.0	0.02
<i>cis-para</i> -Mentha-2,8-dien-1-ol	9.72*	1625.8	[0.04]	6.37*	1134.7	[0.04]
<i>trans</i> -Limonene oxide	6.83	1407.5	0.02	6.37*	1134.7	[0.04]
Citronellal	7.23	1437.0	0.05	6.66	1153.3	0.05
Terpinen-4-ol	8.82	1555.4	0.01	6.99	1174.4	0.01
α -Terpineol	10.02*	1650.6	[0.18]	7.22	1188.8	0.13
Unknown MISC XXXI [m/z 121, 79 (98), 93 (87), 94 (73), 91 (63), 105 (45)...]	8.01*	1493.6	[0.05]	7.26	1191.9	0.01
Unknown MISC XXXII [m/z 121, 79 (61), 93 (55), 94 (40), 91 (39), 84 (37)...]	8.30*	1515.7	[0.56]	7.31	1194.8	0.01
Decanal	7.53	1458.6	0.15	7.48	1205.8	0.14
Octyl acetate	7.31	1442.3	0.04	7.62	1214.8	0.04
<i>trans</i> -Carveol	11.64	1784.3	0.02	7.67	1218.5	0.02
Nerol	11.31	1756.4	0.04	7.84	1229.6	0.04

<i>cis</i> -Carveol	11.98	1813.5	0.02	7.88	1232.3	0.03
Citronellol	10.97	1728.2	0.05	7.90	1233.9	0.01
Neral	9.72*	1625.8	[0.04]	7.98*	1238.8	[0.05]
Carvone	10.24	1668.2	0.03	7.98*	1238.8	[0.05]
Geraniol	11.88	1804.6	0.01	8.26	1257.4	0.01
(2 <i>E</i>)-Decenal	9.37	1597.8	0.01	8.32	1261.4	0.01
Perillaldehyde	10.91	1723.2	0.01	8.42	1268.0	0.02
Geranial	10.35	1676.5	0.03	8.44	1269.6	0.03
Limonen-10-ol	13.39	1939.3	0.01	8.75	1290.3	0.01
Thymol	15.37	2128.9	0.02	8.95	1303.8	0.02
Undecanal	8.91	1562.4	0.01	9.00	1307.1	0.01
<i>para</i> -Mentha-1,8-diene-4-hydroperoxide				9.40	1335.1	0.02
Limonene <i>trans</i> -glycol	16.22	2213.9	0.02	9.48	1341.1	0.01
Unknown PIMA XXVI [m/z 43, 81 (96), 95 (85), 67 (74), 69 (68), 41 (66)...204 (1)]				9.68	1354.8	0.02
Neryl acetate	10.42	1682.5	0.07	9.82	1365.3	0.06
α -Copaene	7.38	1447.4	0.05	9.92	1371.7	0.04
Geranyl acetate	10.79	1713.1	0.04	10.12*	1386.4	[0.04]
β -Cubebene	8.01*	1493.6	[0.05]	10.12*	1386.4	[0.04]
β -Elemene	8.66*	1543.3	[0.07]	10.16	1389.0	0.03
Dodecanal	10.22	1666.6	0.03	10.44	1408.5	0.04
β -Caryophyllene	8.66*	1543.3	[0.07]	10.49	1412.5	0.04
β -Copaene	8.59	1538.3	0.01	10.63	1423.1	0.01
<i>trans</i> - α -Bergamotene	8.70	1547.0	0.02	10.79	1434.6	0.01
α -Humulene	9.52	1610.3	0.02	10.95	1446.6	0.02
(<i>E</i>)- β -Farnesene	9.77	1630.3	0.02	11.10	1457.5	0.02
Germacrene D	10.02*	1650.6	[0.18]	11.33	1474.8	0.05
Valencene	10.14	1659.9	0.06	11.49	1487.0	0.06
α -Muurolene	10.30	1672.7	0.01	11.64	1497.7	0.01
γ -Cadinene	10.74	1708.4	0.03	11.78	1508.4	0.04
δ -Cadinene	10.66	1702.0	0.05	11.91	1519.0	0.05
α -Elemol	14.29	2023.7	0.02	12.25	1545.5	0.02
(<i>E</i>)-Nerolidol	14.02	1998.0	0.01	12.48	1563.4	0.01
Germacrene D-4-ol	13.91	1987.7	0.01	12.56	1569.9	0.01
Caryophyllene oxide	13.03	1906.3	0.01	12.61	1573.3	0.01
Tetradecanal	12.80	1885.5	0.01	13.09	1611.4	0.01
β -Sinensal	15.69	2160.3	0.03	14.09	1693.7	0.03
α -Sinensal	16.65	2258.8	0.04	14.73	1749.2	0.04
<i>meta</i> -Camphorene	15.61	2152.4	0.06	16.93	1948.4	0.06
Palmitic acid				17.16	1970.1	0.03
Linoleic acid				18.85	2137.5	0.02

Oleic acid		18.91	2143.6	0.03
Stearic acid		19.16	2169.9	0.05
Tetramethoxyflavone isomer		27.14	3136.3	0.02
Tangeretin		27.19	3141.5	0.19
3,3',4',5,6,7,8-Heptamethoxyflavone		29.32	3324.1	0.08
Nobiletin		29.39	3328.6	0.12
Total reported	98.80%		99.09%	

*: Two or more compounds are coeluting on this column

[xx]: Duplicate percentage due to coelutions, only the first one is taken into account in the consolidated total

†: Peaks apexes were resolved, but peaks overlapped and were summed for analysis

tr: The compound has been detected below 0.005% of total signal.

Note: no correction factor was applied

R.T.: Retention time (minutes)

R.I.: Retention index